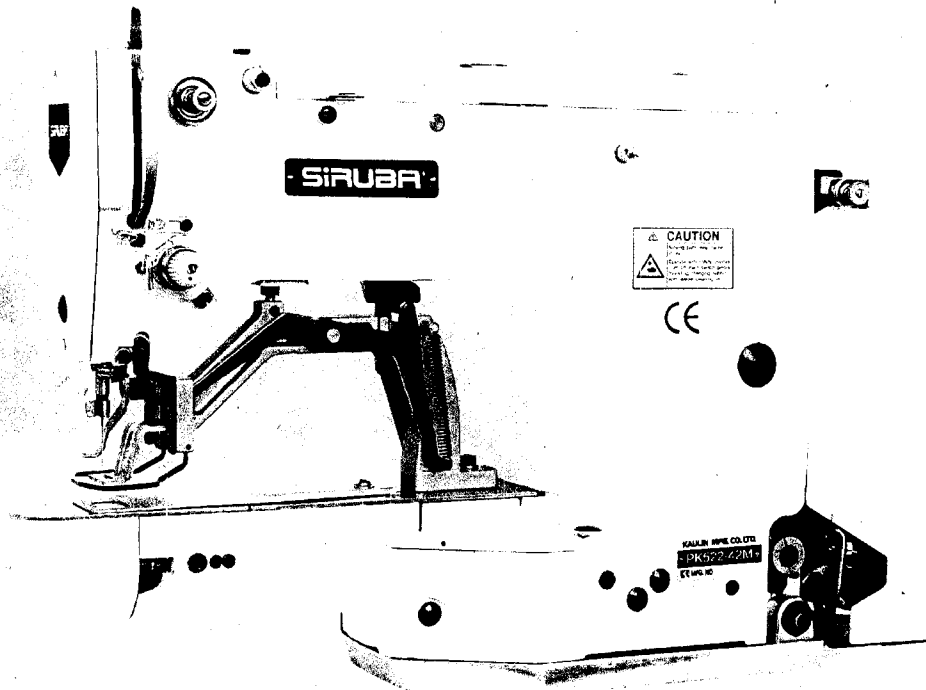


**SIRUBA®**

銀箭牌工業用縫紉機  
INDUSTRIAL SEWING MACHINE

**PK522**

使用說明與零件圖  
INSTRUCTION AND PARTS LIST

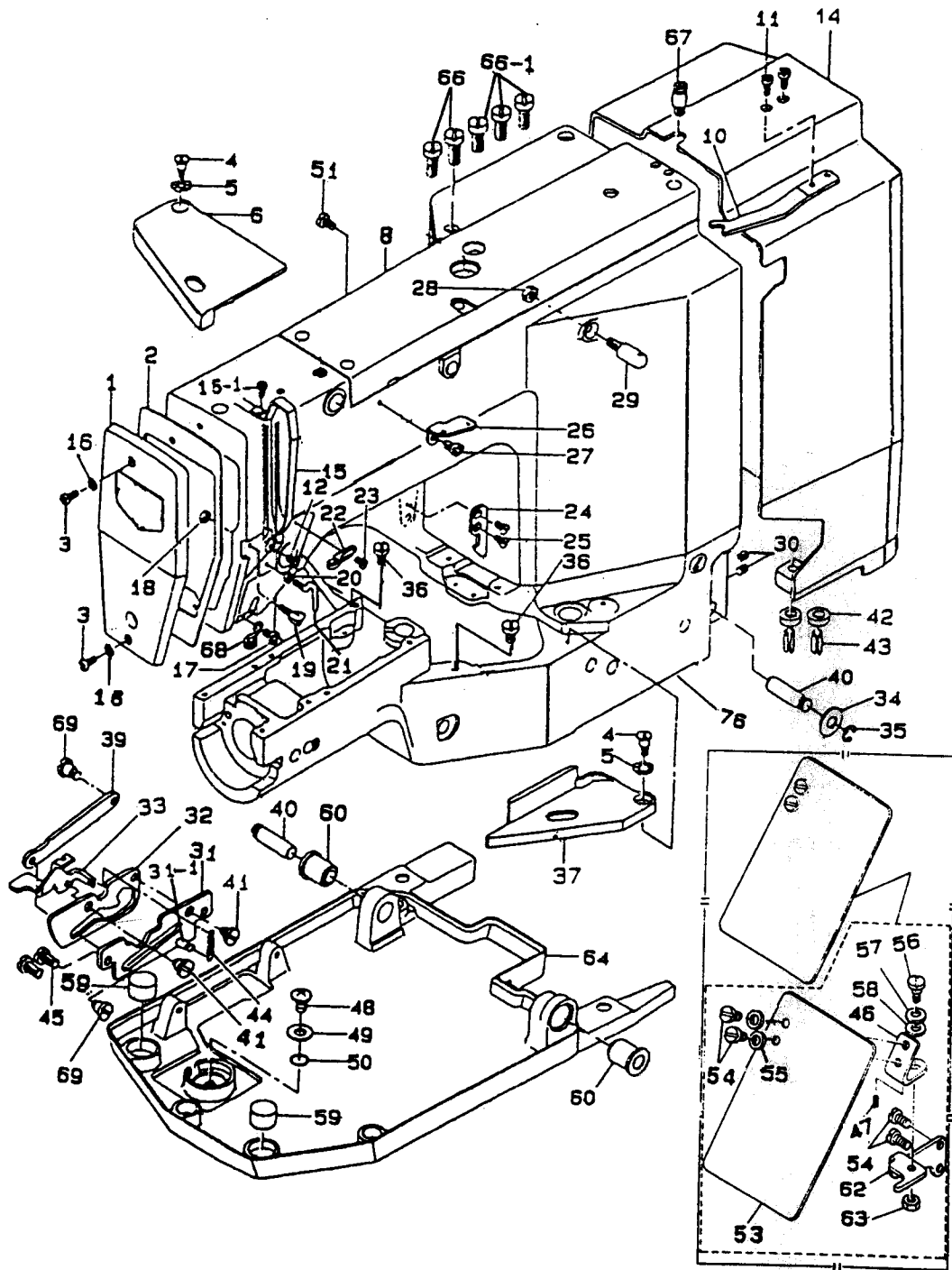


CE

 高林股份有限公司  
KAULIN MFG. CO., LTD.

## CONTENTS

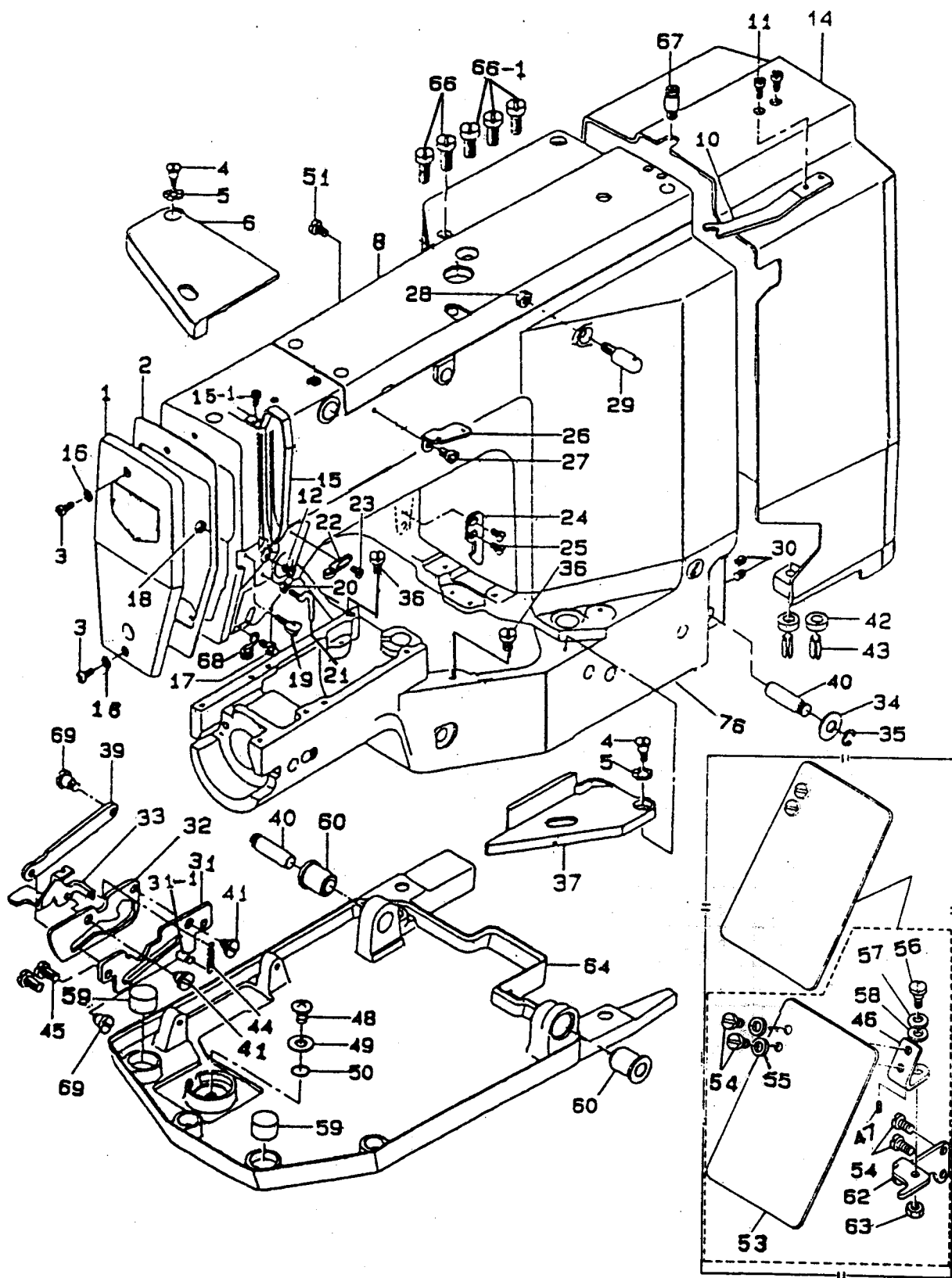
- 1 .E1- FRAME & MISCELLANEOUS COVER COMPONENTS .
- 2 .E2- MAIN SHAFT COMPONENTS .
- 3 .E3- NEEDLE BAR COMPONENTS .
- 4 .E4- THREAD TENSION RELEASE COMPONENTS .
- 5 .E5- SHUTTLE DRIVER SHAFT COMPONENTS .
- 6 .E6- FEED MECHANISM COMPONENTS .
- 7 .E7- THREAD TRIMMING COMPONENTS .
- 8 .E8- PEDAL PRESSURE DECREASING UNIT COMPONENTS .
- 9 .E9- STOP-MOTION MECHANISM COMPONENTS .
- 10 .E10- LUBRICATION MECHANISM COMPONENTS .
- 11 .E11- ACCESSORIES .



E1

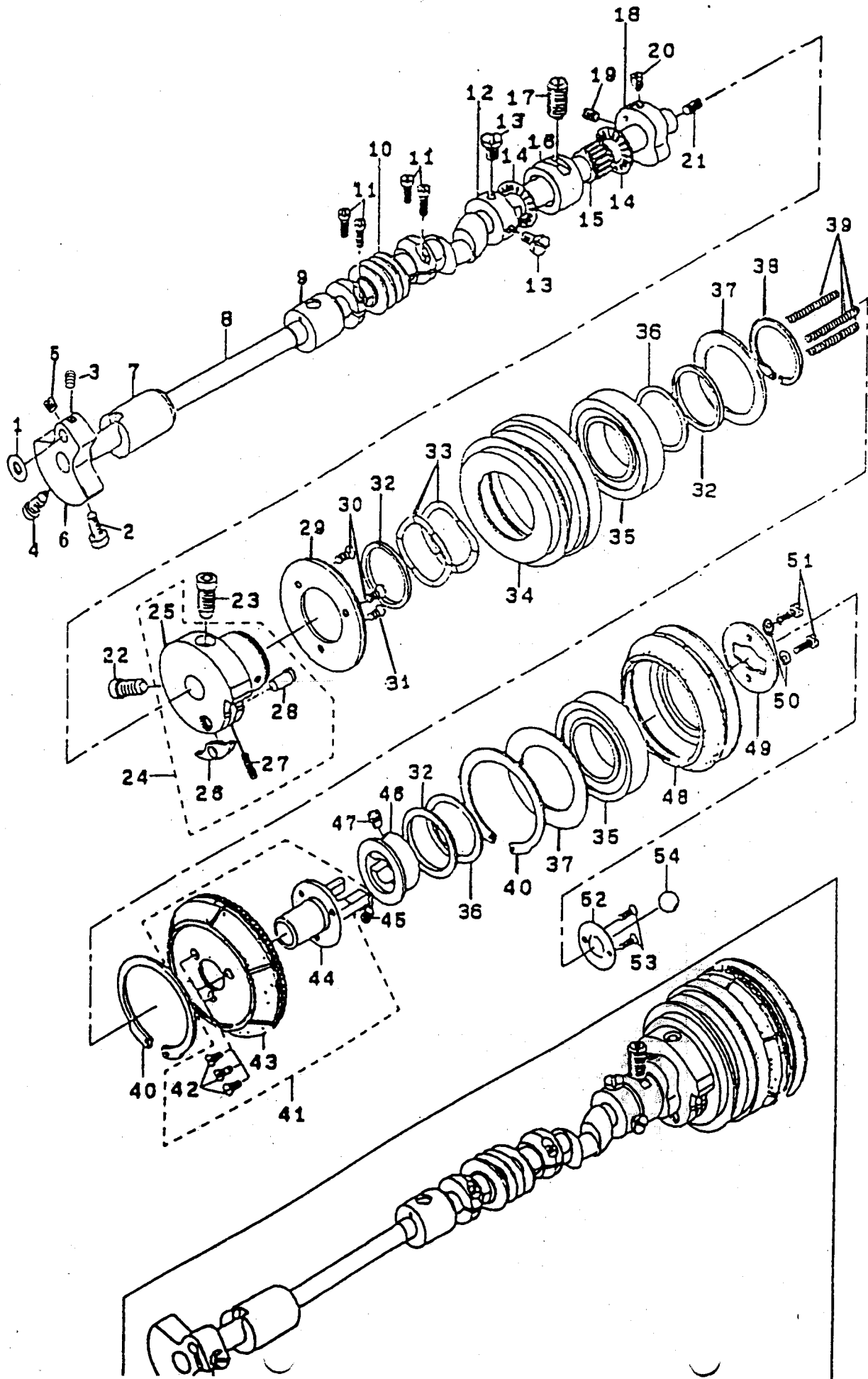
FRAME & MISCELLANEOUS COVER COMPONENTS

REF. NO.	DESCRIPTION	QTY
E 1 - 0 1	FACE PLATE ASM	
E 1 - 0 2	FACE PACKING	
E 1 - 0 3 F	SCREW 11/64-40	2
E 1 - 0 4 F	HINGE SCREW	2
E 1 - 0 5	WAVED WASHER 6.4*11*0.3	2
E 1 - 0 6	BED COVER B	
E 1 - 0 8	TOP COVER	
E 1 - 1 0	BELT COVER FIXING PLATE	
E 1 - 1 1 F	SCREW 11/64-40	2
E 1 - 1 2 F	SCREW 9/64-40	2
E 1 - 1 4	BELT COVER	
E 1 - 1 5	THREAD TAKE-UP LEVER OIL GAURD	
E 1 - 15-1F	SCREW 9/64-40	
E 1 - 1 6	WASHER 4.8*8.4*0.8	2
E 1 - 1 7 F	SCREW 11/64-40	
E 1 - 1 8 H	NUT 9/64-40	
E 1 - 1 9	THREAD GUIDE	
E 1 - 2 0 H	NUT 9/64-40	
E 1 - 2 1	L-SHAPED THREAD GUIDE A	
E 1 - 2 2	ARM THREAD GUIDE A	
E 1 - 2 3 F	SCREW 9/64-40	
E 1 - 2 4	BED FITTING HOOK	
E 1 - 2 5 F	SCREW 11/64-40	2
E 1 - 2 6	THREAD GUIDE PLATE	
E 1 - 2 7 F	SCREW 15/64-28	
E 1 - 2 8 H	NUT 15/64-28	
E 1 - 2 9 F	FIRST THREAD GUIDE	
E 1 - 3 0 F	SCREW 15/64-28	2
E 1 - 3 1	STAY GUIDE ASM.	
E 1 - 31-1	PIN	
E 1 - 3 2	DTAY ROCKER	
E 1 - 3 3	BED ROCKER	
E 1 - 3 4	WASHER 10.5*18*2	
E 1 - 3 5	E-RING	
E 1 - 3 6 F	SCREW 15/64-28	2
E 1 - 3 7	BED COVER A	



FRAME & MISCELLANEOUS COVER COMPONENTS

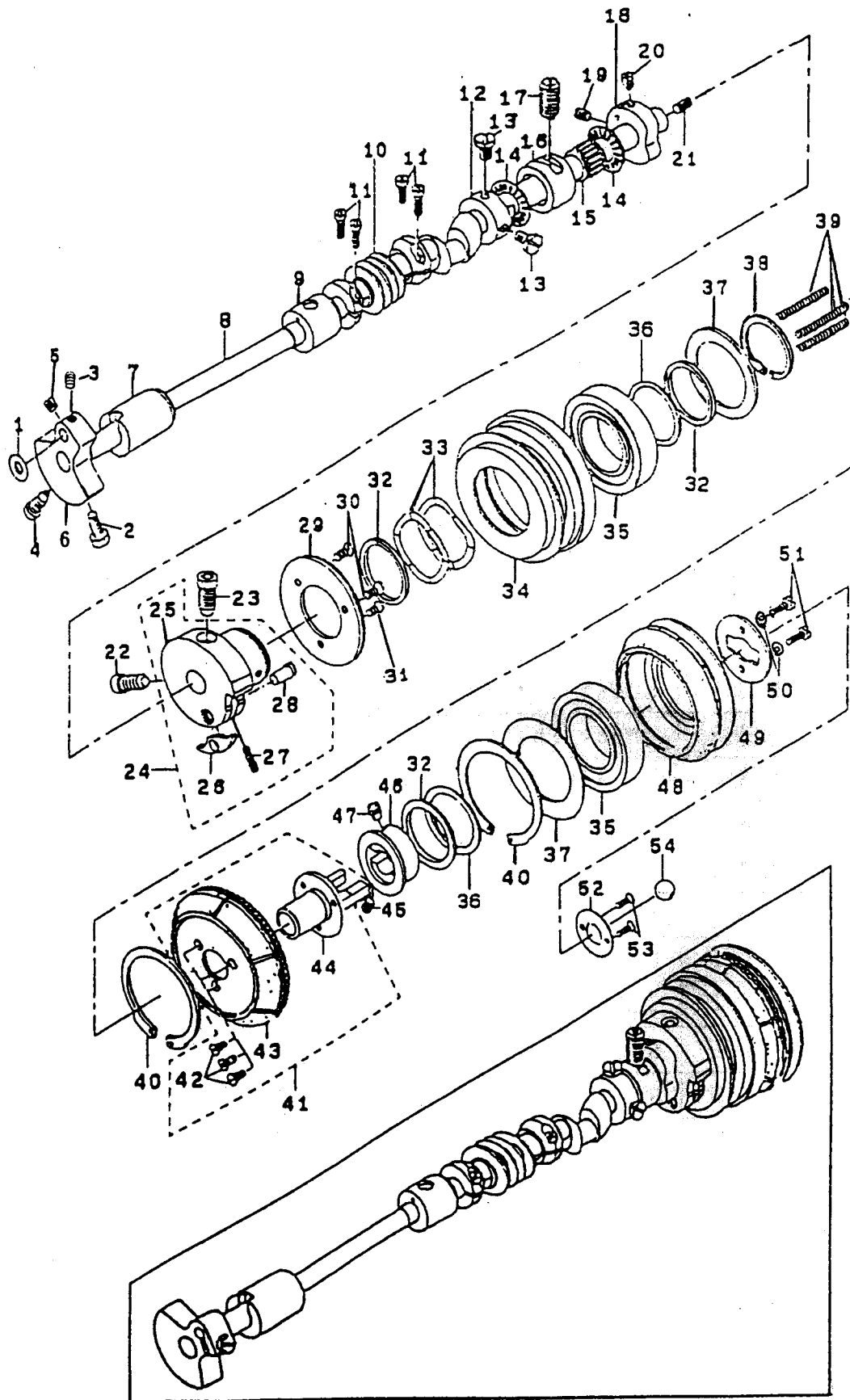
REF. NO.	DESCRIPTION	QTY
E 1 - 3 9	STAY	
E 1 - 4 0	BASE CONNVTING PIN	2
E 1 - 4 1 F	HINGE SCREW	2
E 1 - 4 2	RUBBER WASHER	2
E 1 - 4 3	SPRING PIN 8*20	2
E 1 - 4 4	THREADD TENSION SPRING	
E 1 - 4 5 F	SCREW 15/64-28	2
E 1 - 4 6	SAFETY PLATE INSTALLING PLATE	
E 1 - 4 7	STOPPER PIN	
E 1 - 4 8 F	SCREW	
E 1 - 4 9	WASHER	
E 1 - 5 0	RUBBER RING	
E 1 - 5 1 F	SCREW 11/64-40	
E 1 - 5 3	SAFETY PLATE	
E 1 - 5 4 F	SCREW 11/64-40	4
E 1 - 5 5	WASHER 4.5*10*0.8	2
E 1 - 5 6 F	HINGE SCREW	
E 1 - 5 7	DISK SPRING	
E 1 - 5 8	WASHER 6.5*13*0.8	
E 1 - 5 9	VIBRATION-PROOF RUBBER	2
E 1 - 6 0	RUBBER BUSH	2
E 1 - 6 2	SAFETY PLATE MOUNTING BASE	
E 1 - 6 3 H	NUT 3/16-32	
E 1 - 6 4	BED FITTING BASE	
E 1 - 6 6 F	SCREW 15/64-28	2
E 1 - 66-1F	SCREW 15/64-28	3
E 1 - 6 7 F	SPRING RACK	
E 1 - 6 8	ARM THREAD GUIDE B	
E 1 - 6 9 F	HINGE SCREW	2
E 1 - 7 6	MACHINE FRAME UNIT	



# MAIN SHAFT COMPONENTS

REF. NO.	DESCRIPTION	QTY
E 2 - 0 1	NEEDLE ROD CRANK WASHER	
E 2 - 0 2 F	SCREW 15/64-28	
E 2 - 0 3 F	SCREW 1/4-40	
E 2 - 0 4 F	SCREW 9/32-28	
E 2 - 0 5 F	SCREW 1/4-40	
E 2 - 0 6	COUNTER WEIGHT	
E 2 - 0 7	UPPER SHAFT FRONT METAL	
E 2 - 0 8	MAIN SHAFT	
E 2 - 0 9	UPPER SHAFT INNER METAL	
E 2 - 1 0	WORM ASM.	
E 2 - 1 1 F	SCREW 11/64-40	4
E 2 - 1 2	THRUST COLLAR ASM.	
E 2 - 1 3 F	SCREW 1/4-40	2
E 2 - 1 4	UPPER SHAFT THRUST BEARING	2
E 2 - 1 5	MAIN SHAFT NEEDLE BEARING B	
E 2 - 1 6	UPPER SHAFT REAR METAL	
E 2 - 1 7 F	SET SCREW	
E 2 - 1 8	THREAD CUTTING CUM ASM.	
E 2 - 1 9 F	SCREW 1/4-40	
E 2 - 2 0 F	SCREW 1/4-40	
E 2 - 2 1 F	SCREW 15/64-28	
E 2 - 2 2 F	SCREW 3/8-28	
E 2 - 2 3 F	SCREW 3/8-28	
E 2 - 2 5	STOP-MOTION CAM	
E 2 - 2 6	STOP MOTION CAM LATCH	
E 2 - 2 7	SAFETY PLATE STOPPER SPRING	

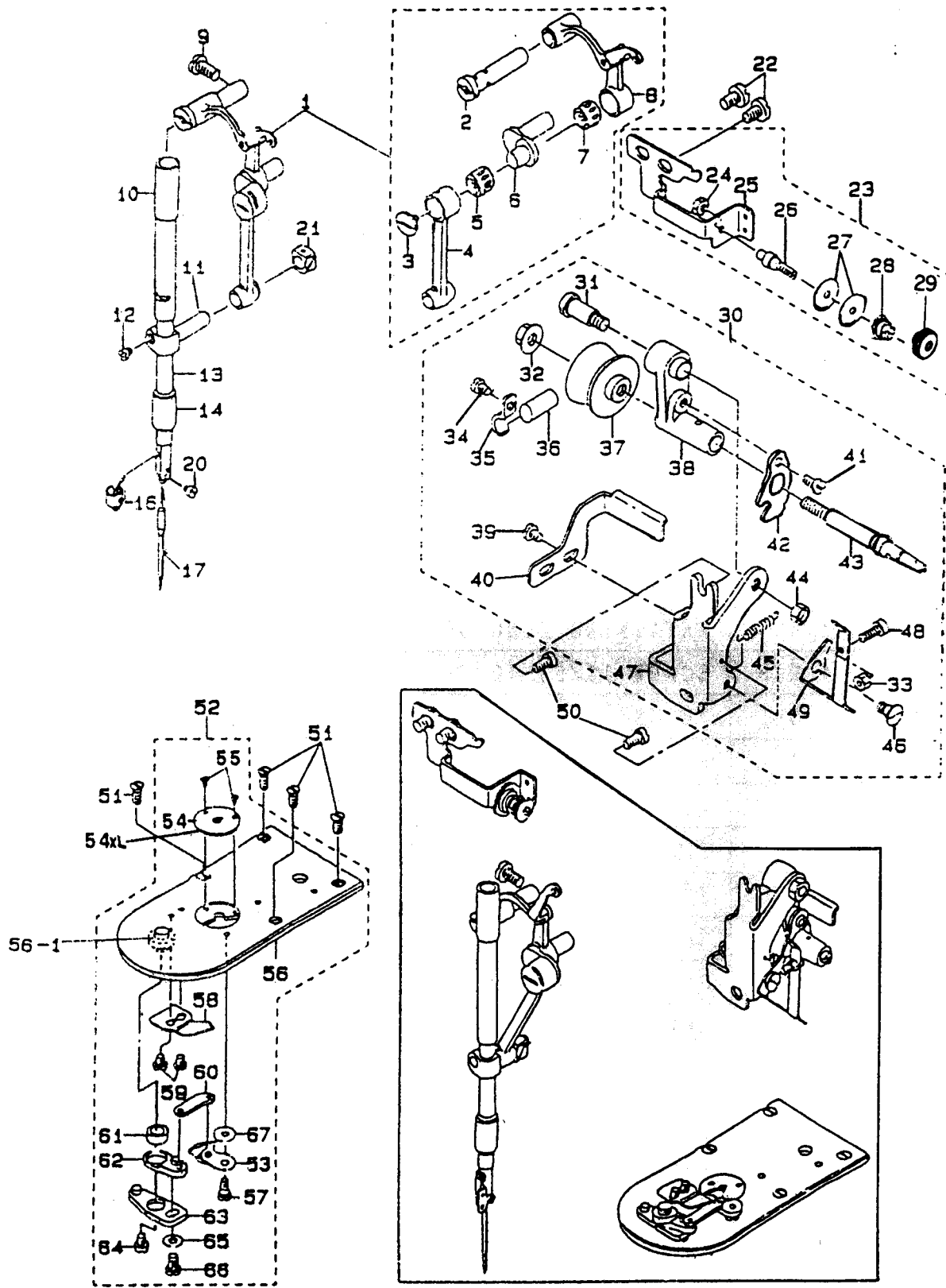




E2

MAIN SHAFT COMPONENTS

REF. NO.	DESCRIPTION	QTY
E 2 - 2 8	PIN	
E 2 - 2 9	HIGH SPEED CLUTCH PLATE ASM.	
E 2 - 3 0 F	SCREW 11/64-40	2
E 2 - 3 1 F	SCREW 11/64-40	
E 2 - 3 2	SPACER	3
E 2 - 3 3	SPRING	2
E 2 - 3 4	HIGH SPEED PULLEY	
E 2 - 3 5	BEARING	2
E 2 - 3 6	SHIM	6
E 2 - 3 7	WASHER	2
E 2 - 3 8	RETAINING RING 32.2	
E 2 - 3 9	SLOW SPEED PULLEY SPRING	3
E 2 - 4 0	RETAINING RING 66.2	2
E 2 - 4 2 F	SCREW 11/64-40	3
E 2 - 4 3	PULLEY	
E 2 - 4 4	PULLEY SHAFT	
E 2 - 4 5 F	SCREW 1/4-40	
E 2 - 4 6	SLOW SPEED PULLEY SHAFT	
E 2 - 4 7 F	SCREW 1/4-40	
E 2 - 4 8	SLOW SPEED PULLEY	
E 2 - 4 9	SLOW SPEED PULLEY PLATE	
E 2 - 5 0	SPRING WASHER 4.5*8.5*1	2
E 2 - 5 1 F	SCREW 11/64-40	2
E 2 - 5 2	BALL RETAINER	
E 2 - 5 3 F	SCREW 9/64-40	2
E 2 - 5 4	STOP-MOTION BALL	



E3

NEEDLE BAR COMPONENTS

REF. NO.	DESCRIPTION	QTY
E 3 - 0 1	LINK BALANCE ASM.	
E 3 - 0 2	BALANCE CRANK PIN	
E 3 - 0 3 F	LEFT SCREW	
E 3 - 0 4	NEEDLE BAR CRANK ROD	
E 3 - 0 5	NEEDLE DRIVING LEVER BEARING C	
E 3 - 0 6	NEEDLE ROD CRANK	
E 3 - 0 7	NEEDLE BEARING	
E 3 - 0 8	BALANCE ASM.	
E 3 - 0 9 F	SCREW 15/64-28	
E 3 - 1 0	NEEDLE ROD METAL	
E 3 - 1 1	NEEDLE ROD HOLDER ASM.	
E 3 - 1 2 F	SCREW 9/64-40	
E 3 - 1 3	NEEDLE BAR	
E 3 - 1 4	NEEDLE ROD LOWER METAL	
E 3 - 1 6	NEEDLE BAR THREAD GUIDE	
E 3 - 1 7	NEEDLE	
E 3 - 2 0 F	SCREW 1/8-44	
E 3 - 2 1	SQUARE BLOCK	
E 3 - 2 2 F	SCREW 15/64-28	2
E 3 - 2 4 H	NUT 11/64-40	
E 3 - 2 5	THREAD GUIDE BRACKET	
E 3 - 2 6	BOBBIN WINDER TENSION POST	
E 3 - 2 7	BOBBIN WINDER TENSION DISC	2
E 3 - 2 8	BOBBIN WINDER TENSION SPRING	
E 3 - 2 9	NUT	
E 3 - 3 1	HINGE SCREW	
E 3 - 3 2 H	NUT	
E 3 - 3 3 H	NUT 11/64-40	
E 3 - 3 4 F	SCREW 11/64-40	
E 3 - 3 5	BOBBIN WINDER BRAKE PRESSURE P	
E 3 - 3 6	BOBBIN WINDER BRAKE	
E 3 - 3 7	BOBBIN WINDER WHEEL	
E 3 - 3 8	BOBBIN WINDER SPINDLE BUSHING	

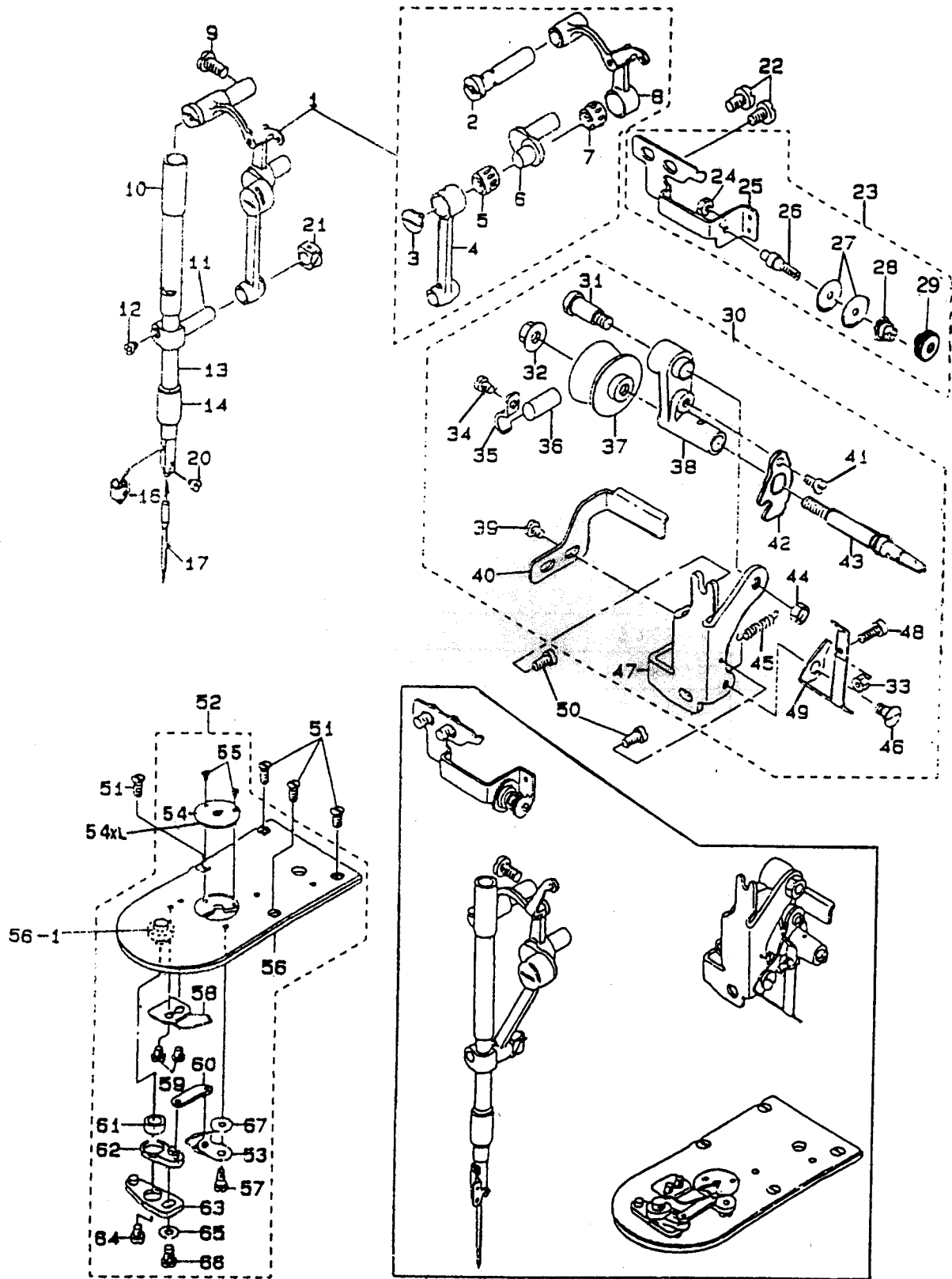
28

29

48

33

46



E3

NEEDLE BAR COMPONENTS

REF. NO.	DESCRIPTION	QTY
E 3 - 3 9 F	SCREW 11/64-40	
E 3 - 4 0	BOBBIN WINDER BELT SUPPORT	
E 3 - 4 1 F	SCREW 11/64-40	
E 3 - 4 2	BOBBIN WINDER TRIP LATCH	
E 3 - 4 3	BOBBIN WINDER SHAFT	
E 3 - 4 4 H	NUT 15/64-28	
E 3 - 4 5	SPRING	
E 3 - 4 6 F	HINGE SCREW	
E 3 - 4 7	BOBBIN WINDER BASE	
E 3 - 4 8 F	BOBBIN WINDER ADJUSTING SCREW	
E 3 - 4 9	BOBBIN WINDER TRIP LATCH	
E 3 - 5 0 F	SCREW 11/64-40	2
E 3 - 5 1 F	SCREW 11/64-40	4
E 3 - 5 3	MOVING KNIFE ASM.	
E 3 - 5 4	NEEDLE HOLE GUID	
E 3 - 5 4 XL	NEEDLE HOLE GUID (G)	
E 3 - 5 5 F	SCREW 3/32-56	2
E 3 - 5 6	NEEDLE PLATE ASM.	
E 3 - 5 6-1 F	SCREW 11/64-40	
E 3 - 5 7 F	HINGE SCREW	
E 3 - 5 8	FIXING KNIFE	
E 3 - 5 9 F	SCREW 9/64-40	2
E 3 - 6 0	MOVING KNIFE LINK	
E 3 - 6 1	THREAD CUTTING LEVER RING	
E 3 - 6 2	THREAD CUTTING LEVER SMALL	
E 3 - 6 3	THREAD CUTTER LEVER ASM., LARG	
E 3 - 6 4 F	SCREW 11/64-40	
E 3 - 6 5	WASHER	
E 3 - 6 6 F	SCREW 11/64-40	
E 3 - 6 7	MOVING KNIFE WASHER C	

3

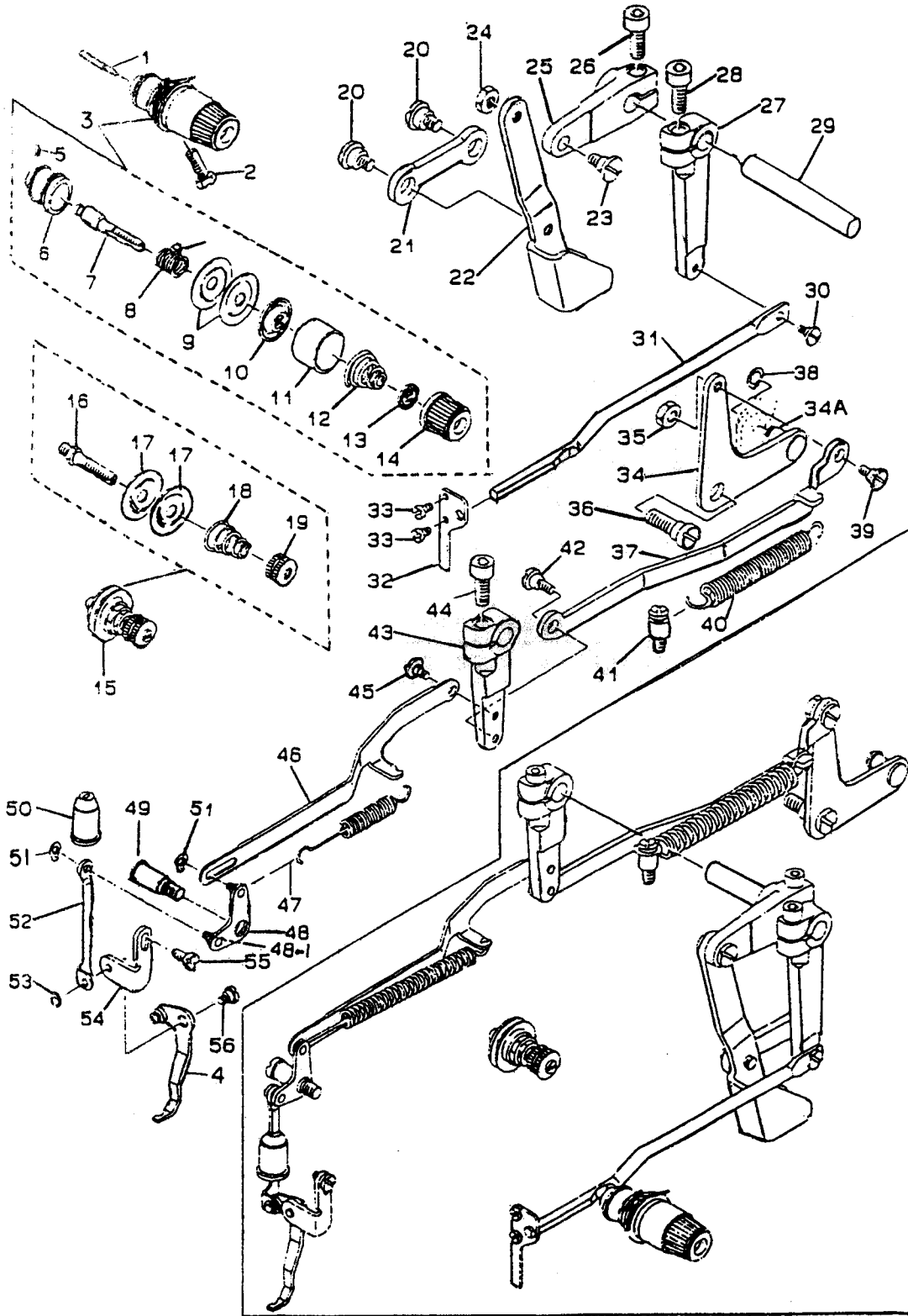


48

-33



46

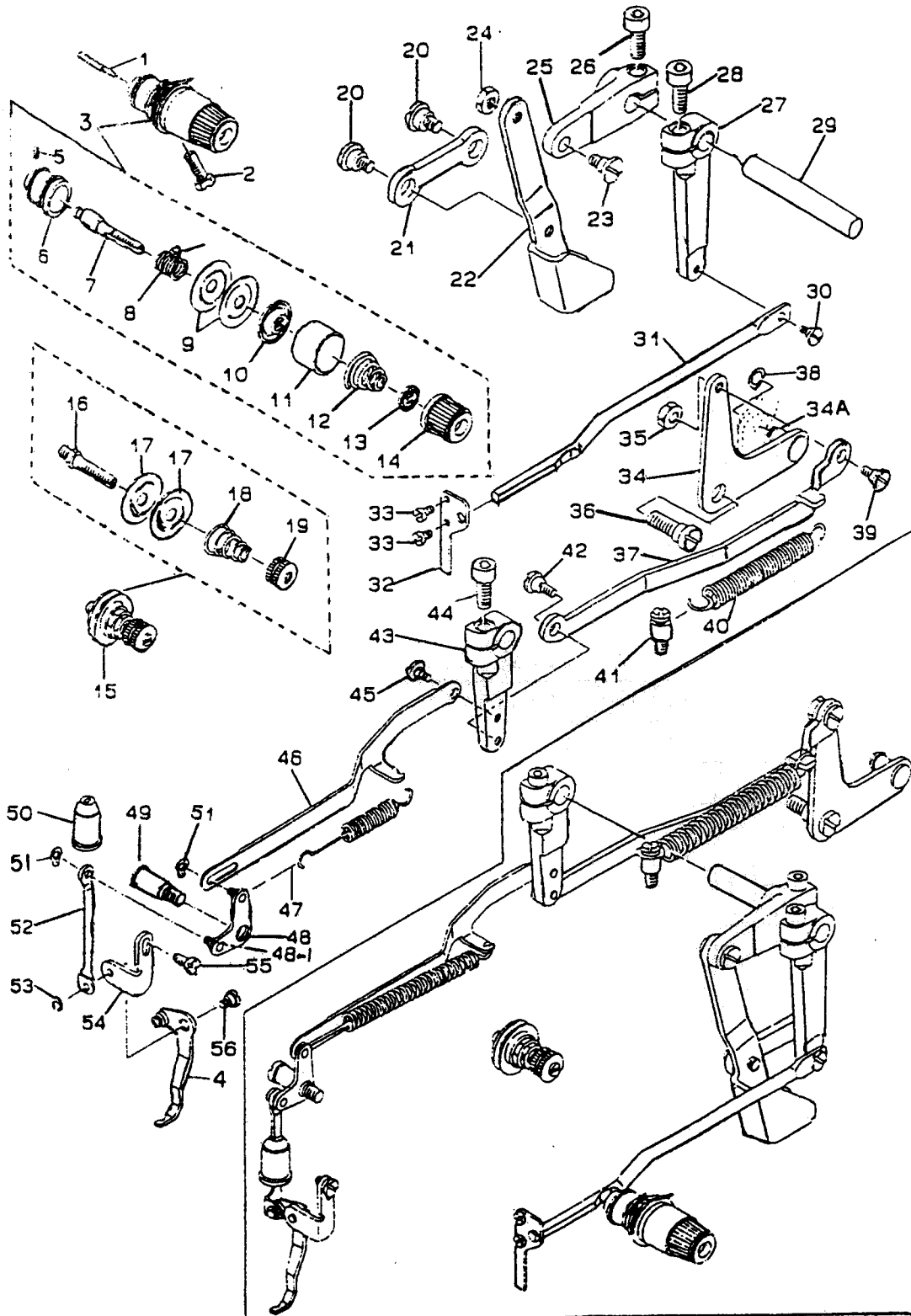


E4

THREAD TENSION RELEASE COMPONENTS

REF. NO.	DESCRIPTION	QTY
E 4 - 0 1	TENSION RELEASE PIN	
E 4 - 0 2 F	SCREW 15/64-28	
E 4 - 0 3	SECOND THREAD TENSION ASM.	
E 4 - 0 4	WIPER ASM.	
E 4 - 0 5 F	SCREW 9/64-40	
E 4 - 0 6	THREAD TENSION ROD, LARGE	
E 4 - 0 7	SECOND THREAD TENSION ROD	
E 4 - 0 8	THREAD TAKE-UP SPRING	
E 4 - 0 9	THREAD TENSION DISK	2
E 4 - 1 0	THREAD TENSION DISK PRESSER	
E 4 - 1 1	THREAD TENSION DISK PRESSER	
E 4 - 1 2	THREAD TENSION SPRING	
E 4 - 1 3	ROTATING STOPPER	
E 4 - 1 4	THREAD TENSION NUT	
E 4 - 1 5	FIRST THREAD TENSION ASM.	
E 4 - 1 6	THREAD TENSION ROD	
E 4 - 1 7	THREAD TENSION DISK	2
E 4 - 1 8	FIRST THREAD TENSION SPRING	
E 4 - 1 9	THREAD TENSION NUT	
E 4 - 2 0 F	HINGE SCREW	2
E 4 - 2 1	CONNECTING LINK	
E 4 - 2 2	LOWERING FOOT	
E 4 - 2 3 F	HINGE SCREW	
E 4 - 2 4 H	NUT 15/64-28	
E 4 - 2 5	LOWERING ARM	
E 4 - 2 6 F	SCREW 15/64-28	
E 4 - 2 7	TENSION RELEASE ARM	
E 4 - 2 8 F	SCREW 15/64-28	
E 4 - 2 9	SHAFT	



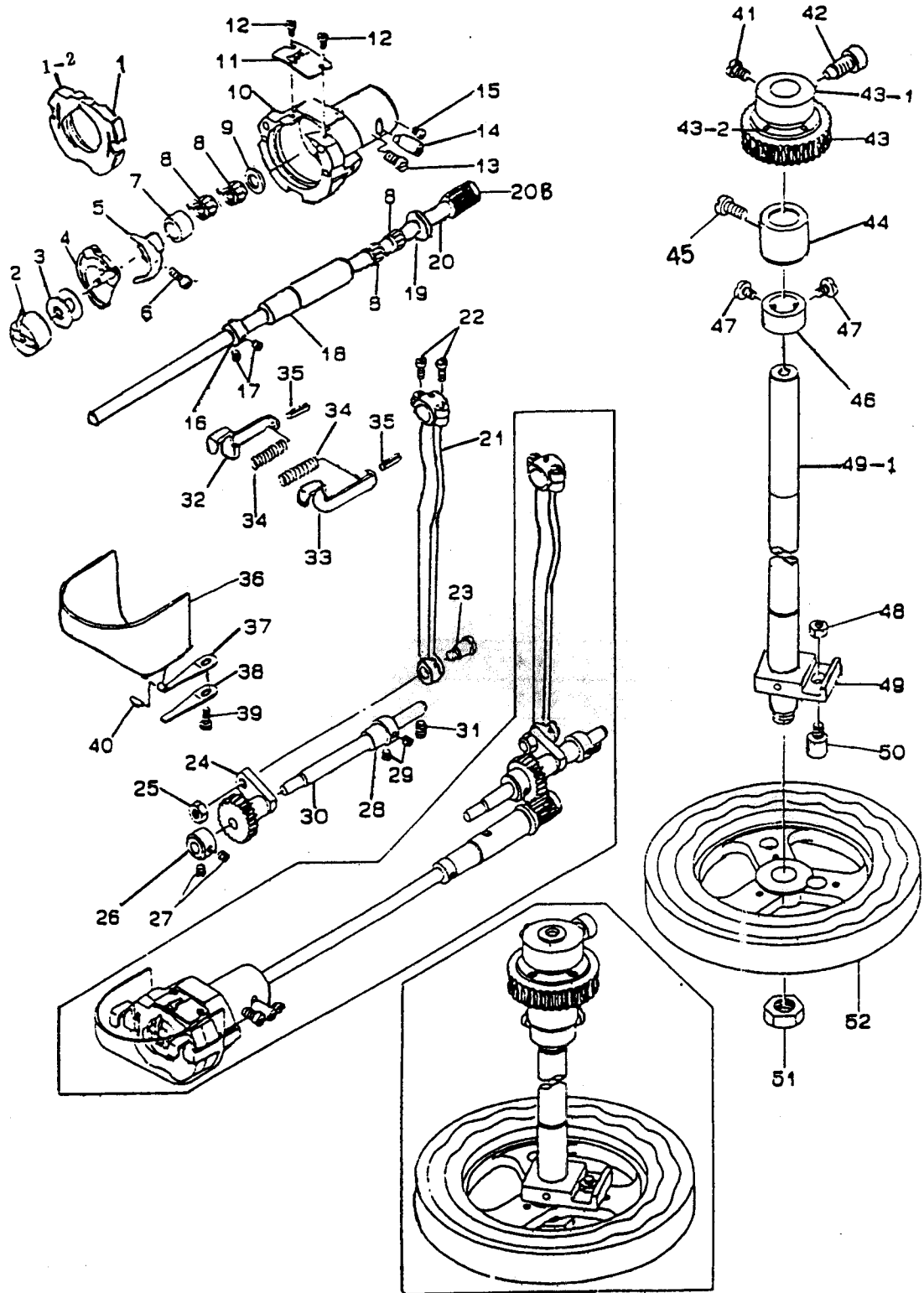


E4

THREAD TENSION RELEASE COMPONENTS

REF. NO.	DESCRIPTION	QTY
E 4 - 3 0 F	HINGE SCREW	
E 4 - 3 1	TENSION RELEASE BAR	
E 4 - 3 2	THREAD TENSION ARM	
E 4 - 3 3 F	SCREW 9/64-40	2
E 4 - 3 4	LOWERING CONNECTING LEVER ASM.	
E 4 - 3 4 A	PIN	
E 4 - 3 5 H	NUT 15/64-28	
E 4 - 3 6 F	HINGE SCREW	
E 4 - 3 7	LOWERING CONNECTING RING	
E 4 - 3 8	C-RING	
E 4 - 3 9 F	HINGE SCREW	
E 4 - 4 0	TENSION SPRING	
E 4 - 4 1 F	SPRING PACK	
E 4 - 4 2 F	HINGE SCREW	
E 4 - 4 3	CONNECTING ARM	
E 4 - 4 4 F	SCREW 15/64-28	
E 4 - 4 5 F	HINGE SCREW	
E 4 - 4 6	WIPER CONNECTING LINK	
E 4 - 4 7	SPRING	
E 4 - 4 8	WIPER CONNECTING ARM ASM.	
E 4 - 48-1	PIN	
E 4 - 4 9 F	WIPER CONNECTING SCREW	
E 4 - 5 0	OIL SHIELD CAP	
E 4 - 5 1	RING	2
E 4 - 5 2	WIPER CONNECTING PLATE	
E 4 - 5 3	SNAP RING	
E 4 - 5 4	WIPER INSTALLING PLATE	
E 4 - 5 5 F	SCREW 11/64-40	
E 4 - 5 6 F	HINGE SCREW	

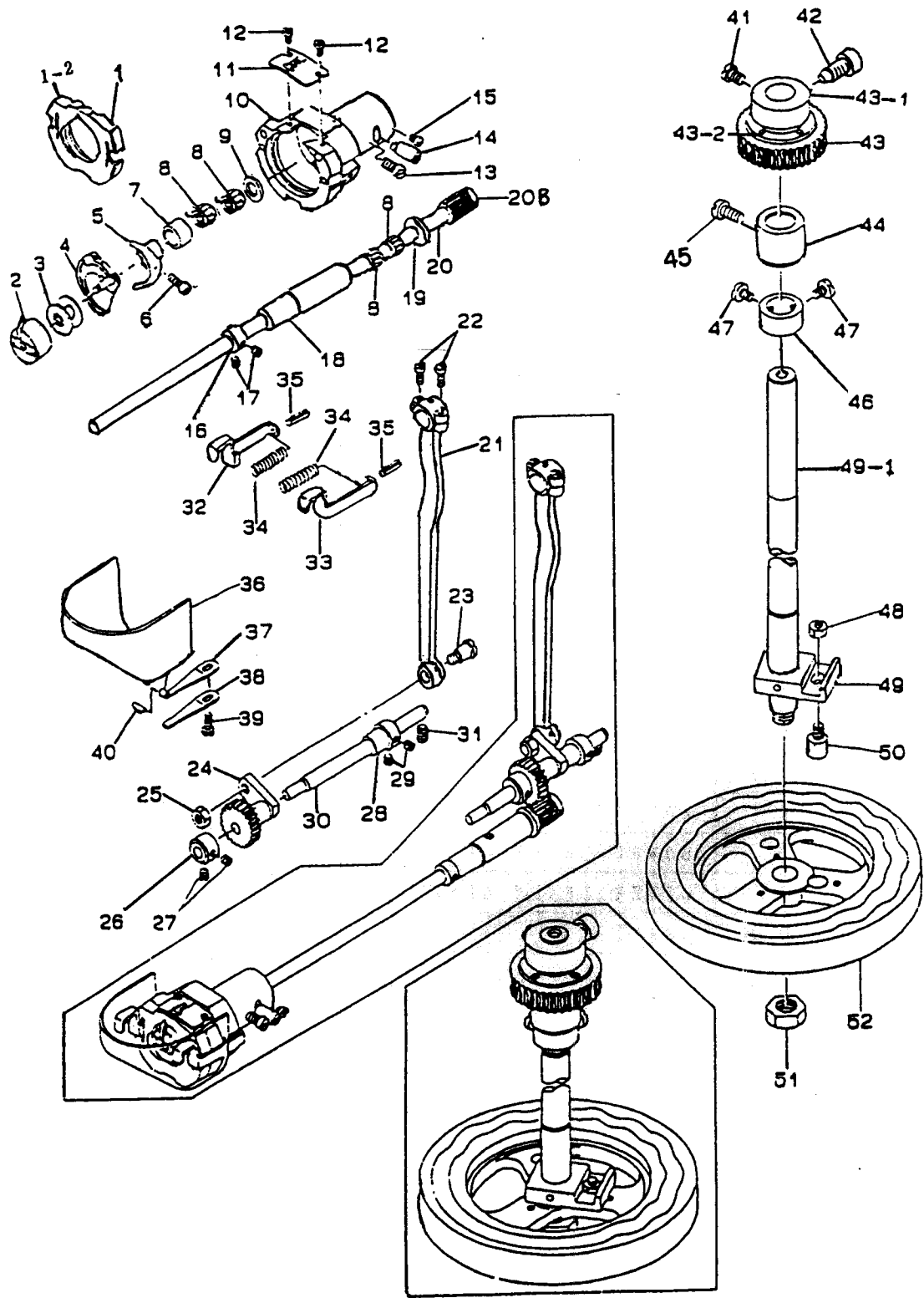
7  
1  
90



E5

## SHUTTLE DRIVER SHAFT COMPONENTS

	REF. NO.	DESCRIPTION	QTY
13-1	E 5 - 0 1	INNER HOOK PRESSER ASM.	
43	E 5 - 1 - 2	PIN	2
	E 5 - 0 2	BOBBIN CASE ASM.	
44	E 5 - 0 3	BOBBIN	
	E 5 - 0 4	INNER HOOK	
	E 5 - 0 5	DRIVER ASM.	
	E 5 - 0 6 F	SCREW 3/16-28	
	E 5 - 0 7	SHUTTLE NEEDLE OUTER RING	
6	E 5 - 0 8	NEEDLE DRIVING LEVER BEARING B	4
3-1	E 5 - 0 9	WASHER 9.5*14.8*2.6	
	E 5 - 1 0	SHUTTLE	
	E 5 - 1 1	SHUTTLE UPPER SPRING	
	E 5 - 1 2 F	SCREW 3/32-56	2
48	E 5 - 1 3 F	SCREW 15/64-28	
49	E 5 - 1 4	SHUTTLE RACE ADJUSTING SHAFT	
	E 5 - 1 5 F	SCREW 11/64-40	
50	E 5 - 1 6	THRUST COLLAR ASM.	
	E 5 - 1 7 F	SCREW 11/64-40	2
	E 5 - 1 8	LOWER SHAFT REAR METAL	
	E 5 - 1 9	LOWER SHAFT THRUST WASHER	
	E 5 - 2 0	LOWER SHAFT GEAR A ASM.	
	E 5 - 2 0 B	SHAFT	
	E 5 - 2 1	CRANK ROD ASM.	
52	E 5 - 2 2 F	SCREW 11/64-40	2
	E 5 - 2 3 F	HINGE SCREW	
	E 5 - 2 4	OSCILLATOR	
	E 5 - 2 5 H	NUT 1/4-40	
	E 5 - 2 6	THRUST COLLAR ASM.	
	E 5 - 2 7 F	SCREW 11/64-40	
	E 5 - 2 8	THRUST COLLAR ASM.	
	E 5 - 2 9 F	SCREW 11/64-40	
	E 5 - 3 0	OSCILLATING SHAFT	

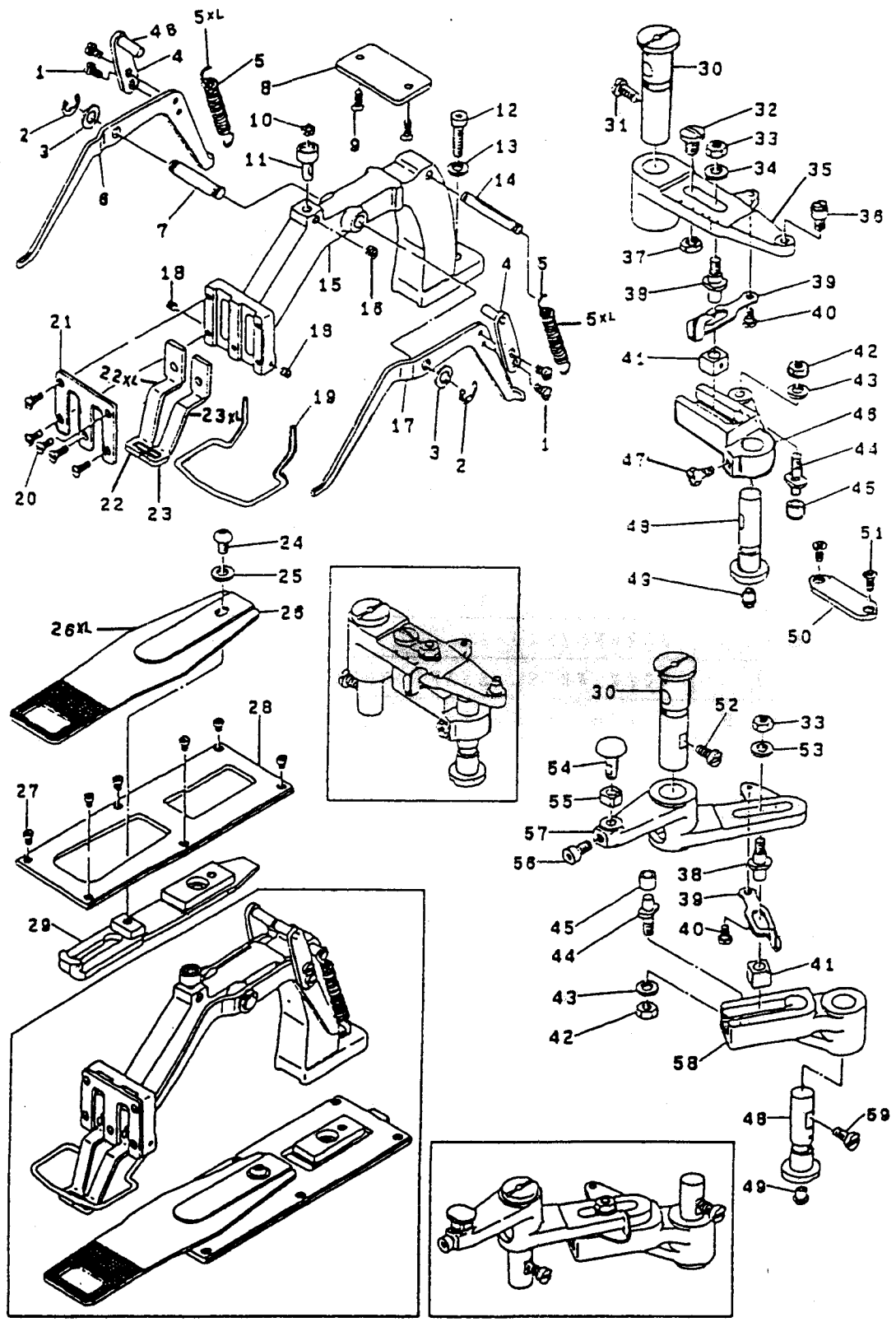


E5

WORM WHEEL DRIVER SHAFT COMPONENTS

①  
 -43-1  
 -43  
 -44  
 7  
 46  
 9-1  
 -48  
 -49  
 -50  
 ?

P. NO.	DESCRIPTION	QTY
5 - 3 1 F	SCREW 15/64-28	
5 - 3 2	INNER HOOK PRESSER, LEFT	
5 - 3 3	INNER HOOK PRESSER, RIGHT	
5 - 3 4	INNER HOOK PRESSER SPRING	2
5 - 3 5	SPRING PIN 2.5*16	2
5 - 3 6	CYLINDER ARM CAP ASM.	
5 - 3 7	HOOK COVER PRESSER SPRING A	
5 - 3 8	HOOK COVER PRESSER SPRING B	
5 - 3 9 F	SCREW 11/64-40	
5 - 4 0	PIN	
5 - 4 1 F	SCREW 1/4-40	
5 - 4 2 F	SCREW 3/8-28	
5 - 4 3	WORM WHEEL ASM.	
5 - 4 3 -1	THRUST COLLAR ASM.	
5 - 43-2F	SCREW 3/16-28	4
5 - 4 4	WORM WHEEL SHAFT BUSHING	
5 - 4 5 F	SCREW 15/64-28	
5 - 4 6	THRUST COLLAR ASM	
5 - 4 7 F	SCREW 1/4-40	2
5 - 4 8 H	NUT 1/4	
5 - 4 9	WORM WHEEL SHAFT ASM.	
5 - 49-1	WORM WHEEL SHAFT	
5 - 5 0	CAM GUIDE PIN	
5 - 5 1 H	NUT 9/16-20	
5 - 5 2	FEED CAM	



E6

FEED MECHANISM COMPONENTS

REF. NO.	DESCRIPTION	QTY
E 6 - 0 1 F	SCREW 11/64-40	4
E 6 - 0 2	E-RING 7	2
E 6 - 0 3	WASHER	2
E 6 - 0 4	LEVER DRIVING PLATE ASM.	2
E 6 - 0 4 B	PIN	2
E 6 - 0 5	TENSION SPRING	2
E 6 - 0 5 XL	TENSION SPRING (G)	
E 6 - 0 6	LIFTING LEVER, LEFT	
E 6 - 0 7	LIFTING LEVER SHAFT	
E 6 - 0 8	SUPPORT PLATE	
E 6 - 0 9 F	SCREW 11/64-40	2
E 6 - 1 0	WORK CLAMP FOOT MOUNTING BASE	7
E 6 - 1 1	BALL RETAINER	
E 6 - 1 2 F	SCREW 15/64-28	
E 6 - 1 3	WASHER 6.2*13*1	
E 6 - 1 4	SPRING SUSPENSION	
E 6 - 1 5	FEED BRACKET	
E 6 - 1 6 F	SCREW 15/64-28	
E 6 - 1 7	LIFTING LEVER, RIGHT	
E 6 - 1 8 F	SCREW 1/8-44	2
E 6 - 1 9	FINGER GUARDE	
E 6 - 2 0 F	SCREW 11/64-40	5
E 6 - 2 1	WORK CLAMP FOOT FACE PLATE	
E 6 - 2 2	WORK CLAMP FOOT, RIGHT	
E 6 - 2 2 XL	WORK CLAMP FOOT, RIGHT (G)	
E 6 - 2 3	WORK CLAMP FOOT, LEFT	
E 6 - 2 3 XL	WORK CLAMP FOOT, LEFT (G)	
E 6 - 2 4 F	SCREW 15/64-28	
E 6 - 2 5	WASHER	
E 6 - 2 6	FEED PLATE	
E 6 - 2 6 XL	FEED PLATE (G)	
E 6 - 2 7 F	SCREW 11/64-40	6
E 6 - 2 8	FEED PLATE PRESSER PLATE	
E 6 - 2 9	FEED PLATE CARRIER BAR	

5  
38

9  
3

42

43

48

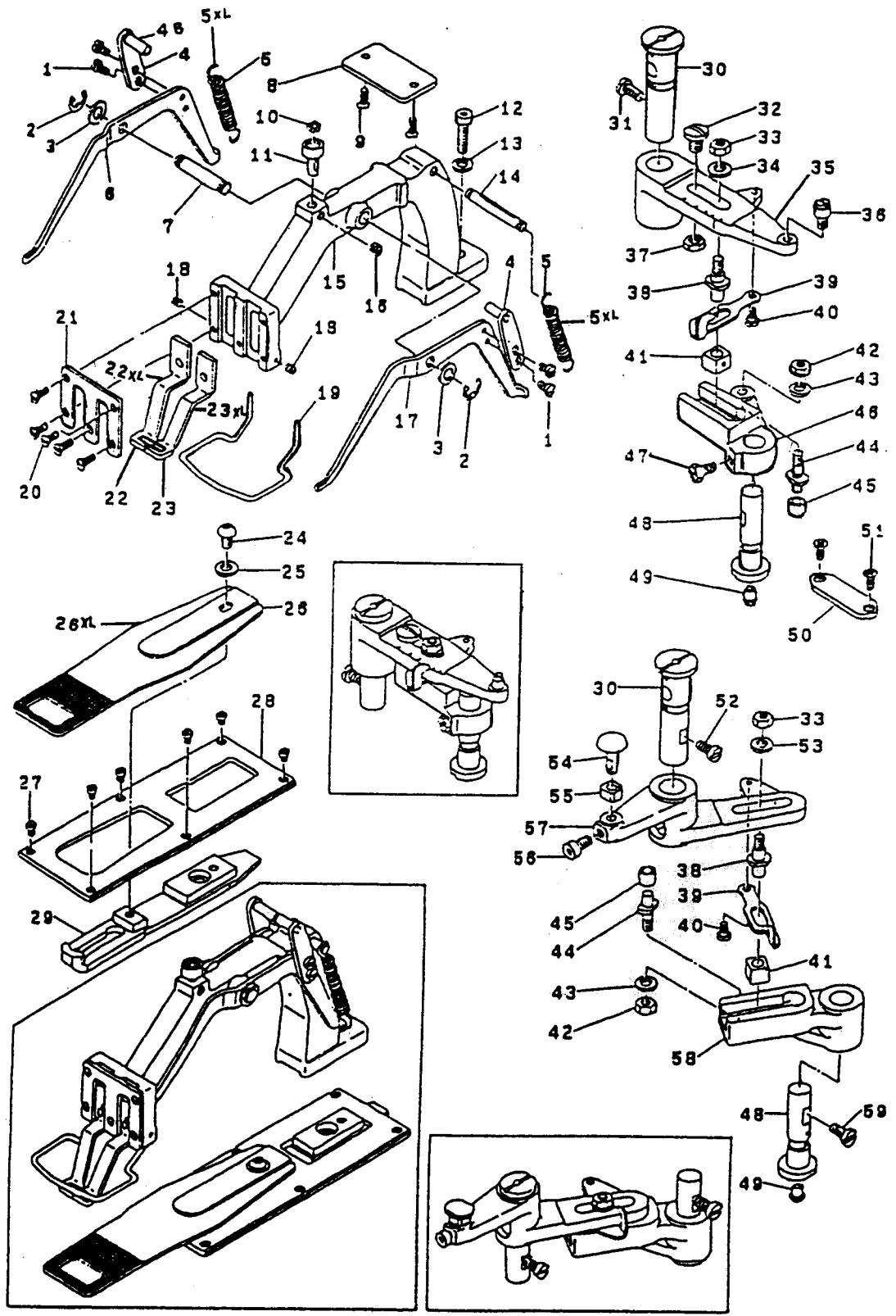
44

45

51

59



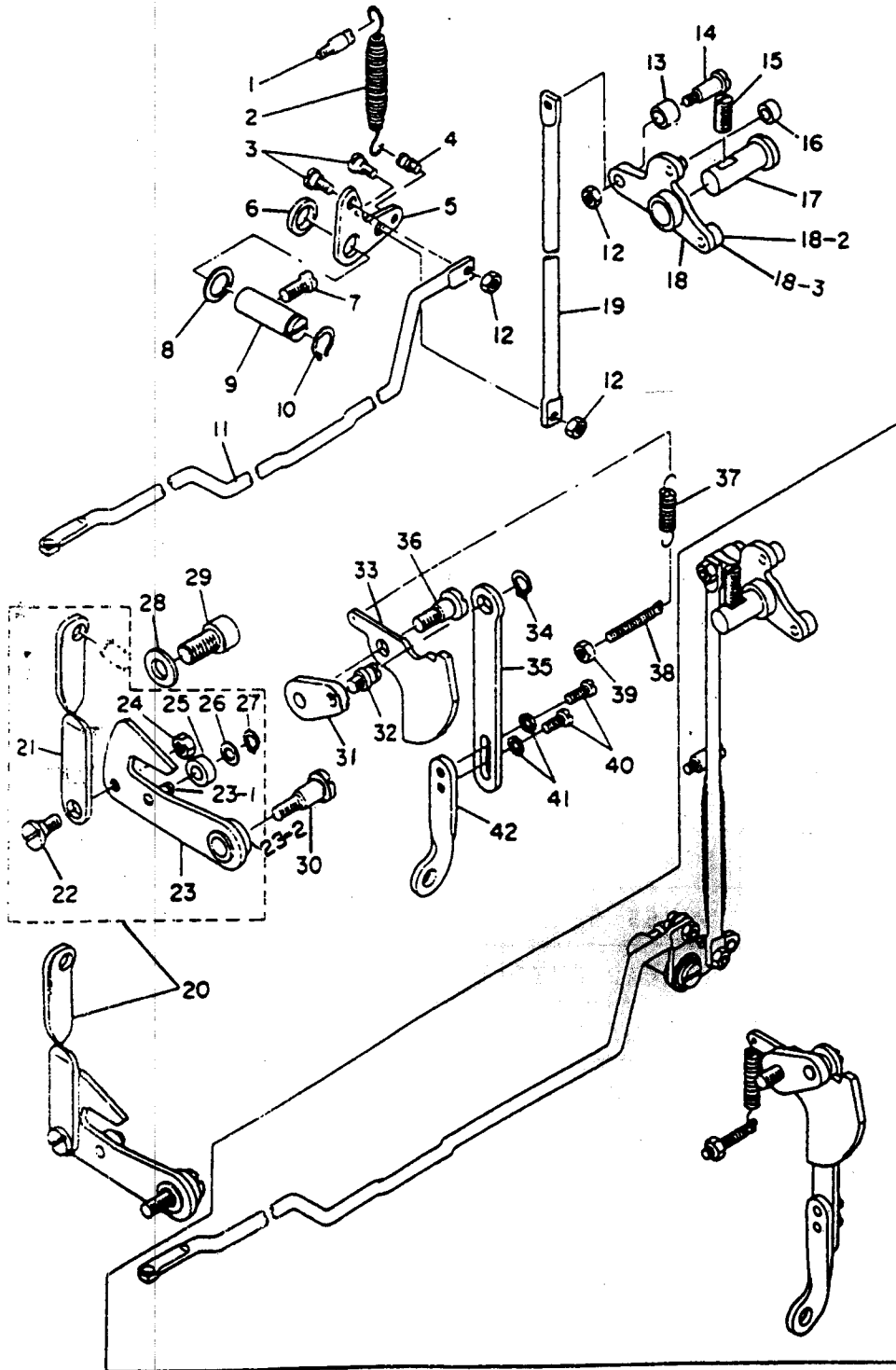


E6

FEED MECHANISM COMPONENTS

REF. NO.	DESCRIPTION	QTY
6 - 3 0	FEED DRIVING ARM SHAFT	2
6 - 3 1 F	SCREW 15/64-28	
6 - 3 2 F	SCREW 5/16-24	
6 - 3 3 H	NUT 15/64-28	2
6 - 3 4	WASHER 7*15*2	
6 - 3 5	FEED REGULATOR	
6 - 3 6	HINGE STUD	
6 - 3 7 H	NUT 5/16-24	
6 - 3 8	FEED REGULATOR STUD	2
6 - 3 9	INDICATOR LEVER	2
6 - 4 0 F	HINGE SCREW	2
6 - 4 1	SLIDE BLOCK B	2
6 - 4 2 H	NUT 1/4-40	2
6 - 4 3	WASHER 6.5*13*0.8	2
6 - 4 4	FEED CAM ROLLER SHAFT	2
6 - 4 5	FEED CAM ROLLER	2
6 - 4 6	FEED DRIVING ARM	
6 - 4 7 F	SCREW 15/64-28	
6 - 4 8	FEED REGULATOR SHAFT	2
6 - 4 9	RUBBER PLUG	2
6 - 5 0	PLATE	
6 - 5 1 F	SCREW 11/64-40	2
6 - 5 2 F	SCREW 15/64-28	
6 - 5 3	WASHER 7*20*4.5	
6 - 5 4	SLIDE BLOCK STUD	
6 - 5 5	SQUARE BLOCK	
6 - 5 6 F	SCREW 15/64-28	
6 - 5 7	FEED ACROSS DRIVING ARM	
6 - 5 8	FEED ACROSS REGULATOR	
6 - 5 9 F	SCREW 15/64-28	

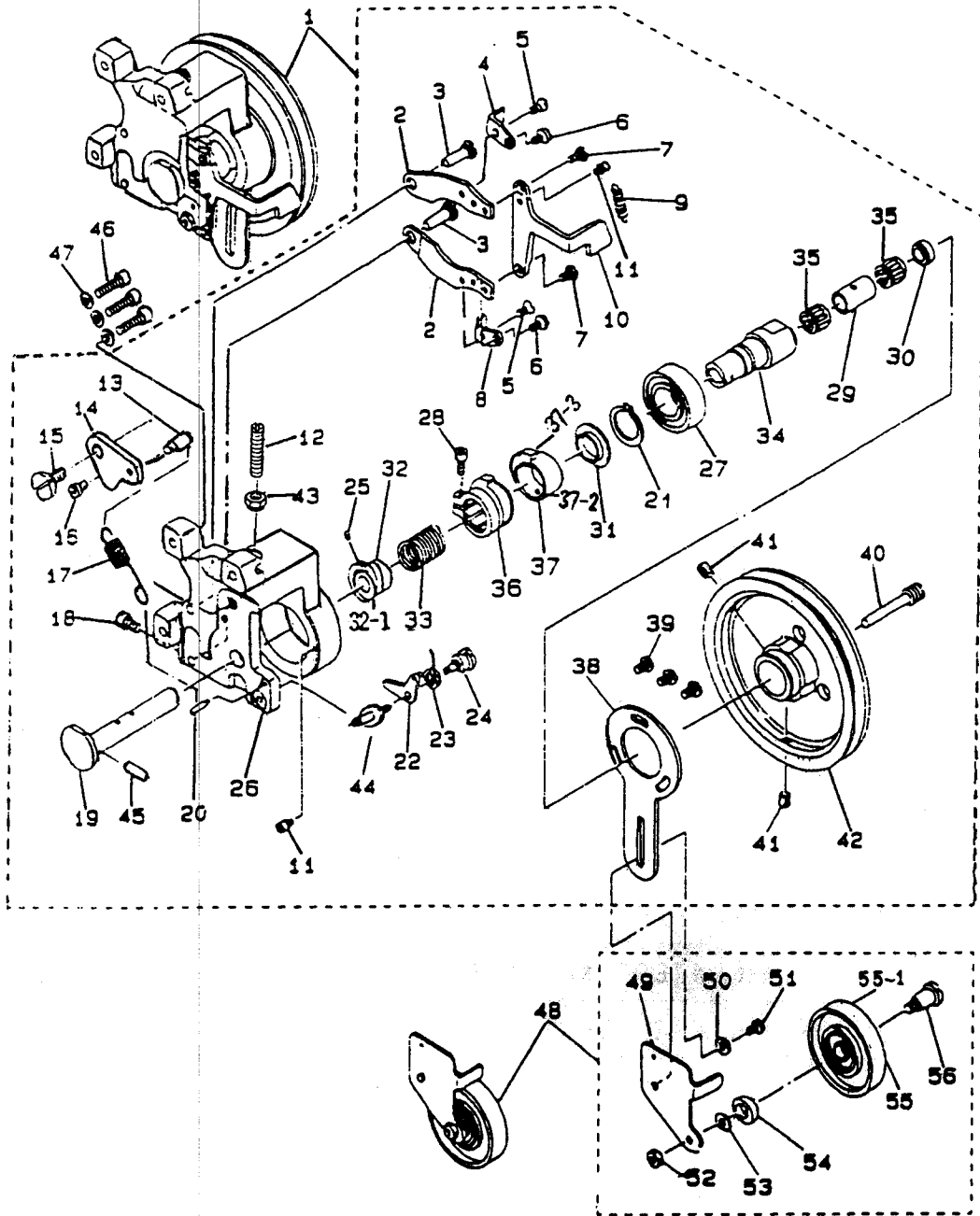
5  
 38  
 8  
 0  
 42  
 43  
 48  
 44  
 45  
 51  
 59



E7

THREAD TRIMMING COMPONENTS

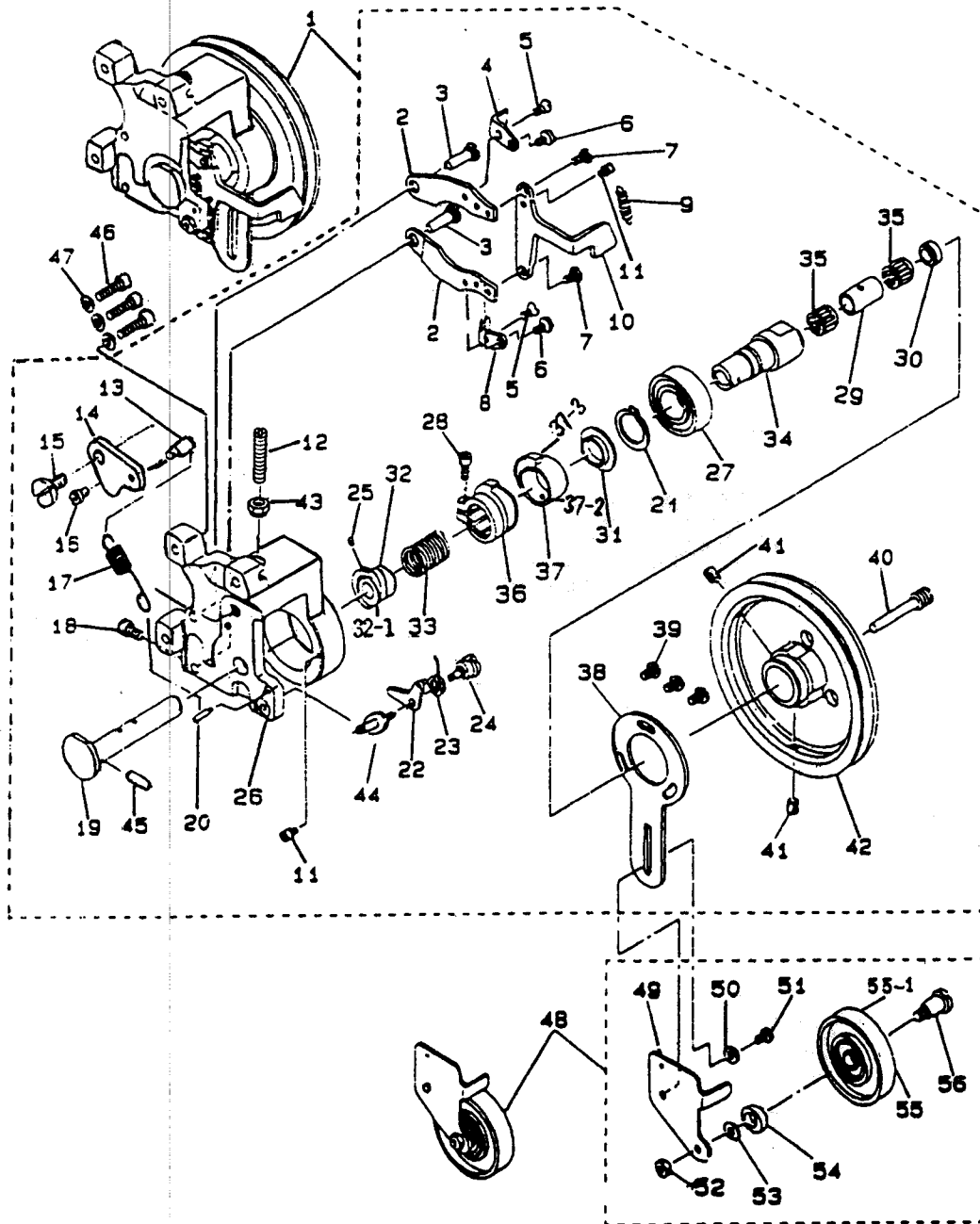
REF.	NO.	DESCRIPTION	QTY
E 7 - 2 2 F		HINGE SCREW 15/64-28	
E 7 - 2 3		LOWERING LEVER ASM.	
E 7 - 2 3 -1		PIN	
E 7 - 2 3 -2		ROLLER	
E 7 - 2 4 H		NUT 15/64-28	
E 7 - 2 5		ROLLER	
E 7 - 2 6		WASHER	
E 7 - 2 7		STOP RING	
E 7 - 2 8		WASHER 9.8*24*2.6	
E 7 - 2 9 F		SCREW 3/8-28	
E 7 - 3 0 F		HINGE SCREW	
E 7 - 3 1		AUXILIARY LEVER	
E 7 - 3 2		SHAFT	
E 7 - 3 3		THREAD TRIMMING AUXILIARY CAM	
E 7 - 3 4		RETAINING RING	
E 7 - 3 5		CONNECTING PLATE B	
E 7 - 3 6 F		HINGE SCREW	
E 7 - 3 7		SPRING	
E 7 - 3 8 F		TENSION SPRING ADJUSTING SCREW	
E 7 - 3 9 H		NUT 11/64-40	
E 7 - 4 0 F		SCREW 11/64-40	2
E 7 - 4 1		WASHER 4.8*8.4*0.8	2
E 7 - 4 2		CONNECTING PLATE A	



E8

MANUAL PRESSURE DECREASING UNIT COMPONENTS

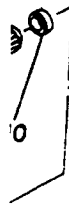
REF.	NO.	DESCRIPTION	QTY
8	- 0 1	PRESSURE DECREASING DEVICE	
8	- 0 2	PRESSURE DECREASING LEVER	2
8	- 0 3 F	STUD	2
8	- 0 4	LEVER LATCH A	
8	- 0 5 F	SCREW 11/64-40	2
8	- 0 6 F	SCREW 11/64-40	2
8	- 0 7 F	HINGE SCREW	2
8	- 0 8	LEVER LATCH B	
8	- 0 9	SPRING	
8	- 1 0	PRESSURE DECREASING LEVER LINK	
8	- 1 1 F	THREAD CUTTING LINK SPRING RAC	2
8	- 1 2 F	SCREW 15/64-28	
8	- 1 3	SUSPENSION PIN	
8	- 1 4	AUXILIARY CAM	
8	- 1 5 F	HINGE SCREW	
8	- 1 6 F	SCREW 11/64-40	
8	- 1 7	SPRING	
8	- 1 8 F	SCREW 15/64-28	2
8	- 1 9	PRESSURE DECREASING SHAFT ASM.	
8	- 2 0	PIN 3*16	
8	- 2 1	SNAP RING 18.5	
8	- 2 2	ROTATION PREVENTING LATCH ASM.	
8	- 2 3	SPRING	
8	- 2 4 F	HINGE SCREW	
8	- 2 5 F	SCREW 11/64-40	
8	- 2 6	PRESSURE DECREASING UNIT FRAME	
8	- 2 7	BEARING	
8	- 2 8 F	SCREW 3/16-28	
8	- 2 9	COLLAR A	
8	- 3 0	COLLAR B	



E8

EDAL PRESSURE DECREASING UNIT COMPONENTS

REF.	NO.	DESCRIPTION	Q TY
E 8 - 3	1	OUTER SLEEV GUIDE	
E 8 - 3	2	DECREASING CLUTCH ASM.	
E 8 - 3	3	CLUTCH SPRING	
E 8 - 3	4	SHAFT	
E 8 - 3	5	BEARING	2
E 8 - 3	6	INNER SLEEVE	
E 8 - 3	7	OUTER SLEEVE	
E 8 - 3	7 - 2	PIN	
E 8 - 3	7 - 3	PIN	
E 8 - 3	8	IDLER PULLEY INSTALLING PLATE	
E 8 - 3	9 F	SCREW 11-64-40	3
E 8 - 4	0 F	SCREW	
E 8 - 4	1 F	SCREW 15/64-28	2
E 8 - 4	2	DRIVING PULLEY	
E 8 - 4	3 F	SCREW 15/64-28	
E 8 - 4	4 F	SCREW	
E 8 - 4	5	PIN	
E 8 - 4	6 F	SCREW 15/64-28	3
E 8 - 4	7	WASHER 6.2*13*1	3
E 8 - 4	8	-----	
E 8 - 4	9	IDLER PULLEY BRACKET	
E 8 - 5	0	WASHER 6.2*13*1	
E 8 - 5	1 F	SCREW 15/64-28	
E 8 - 5	2 H	NUT 15/64-28	
E 8 - 5	3	WASHER 6.1*18.5*2	
E 8 - 5	4	TENSION RING	
E 8 - 5	5	BEARING	
E 8 - 5	5 - 1	IDLER PULLEY ASM.	
E 8 - 5	6 F	HINGE SCREW	

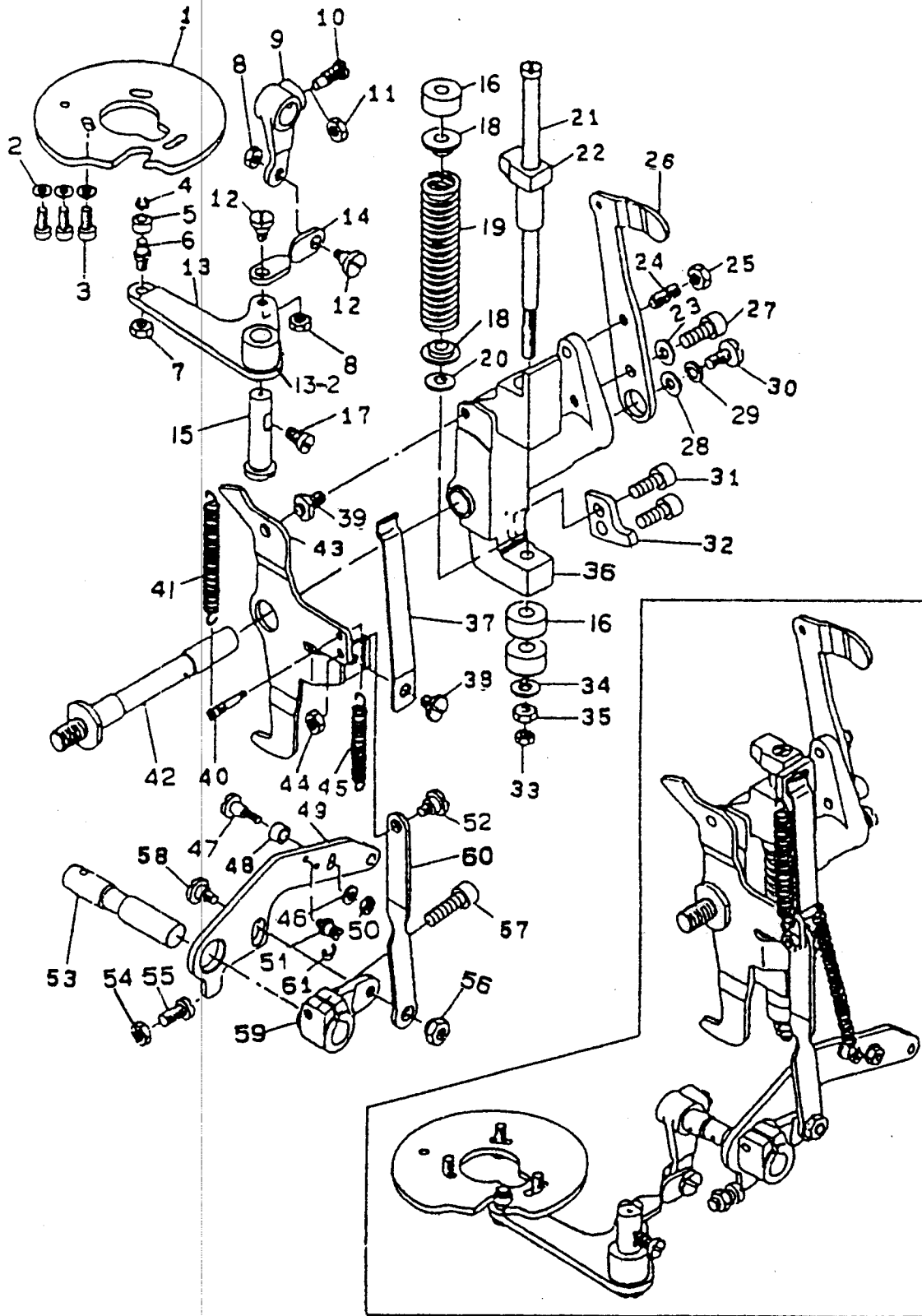


5



56



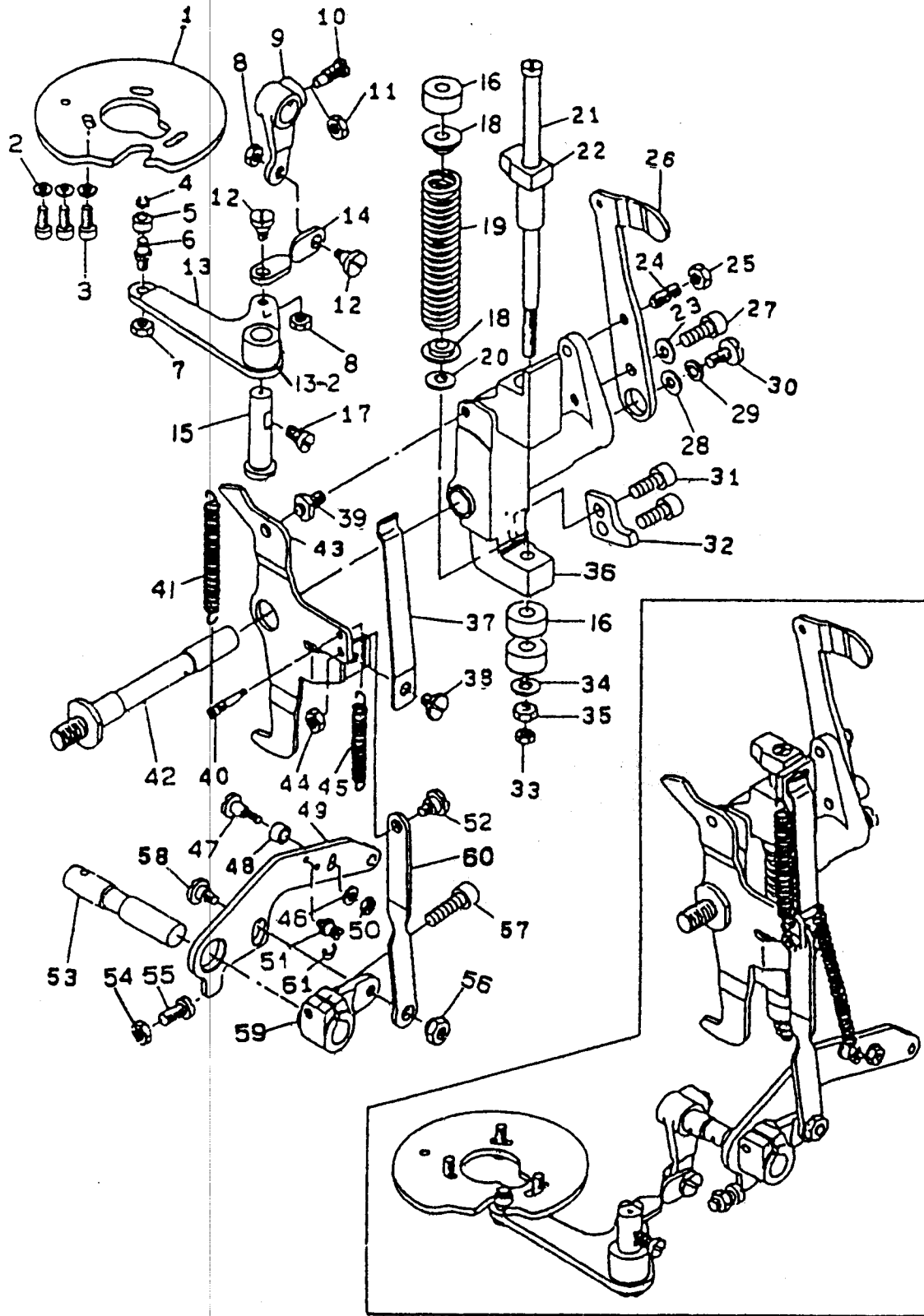


E9

STOP-MOTION MECHANISM COMPONENTS

REF.	NO.	DESCRIPTION	QTY
9	- 0 1	STOP-MOTION REGULATING CAM	
9	- 0 2	WASHER 4.8*8.4*0.8	3
9	- 0 3 F	SCREW 3/16-28	3
9	- 0 4	RETAINING RING 4.7	
9	- 0 5	COLLAR	
9	- 0 6 F	ROLLER SHAFT	
9	- 0 7 H	NUT 15/64-28	
9	- 0 8 H	NUT 15/64-28	2
9	- 0 9	STOP-MOTION ARM B	
9	- 1 0 F	SCREW 9/32-28	
9	- 1 1 H	NUT 9/32-28	
9	- 1 2 F	HINGE SCREW	2
9	- 1 3	REGULATING LEVER ASM.	
9	- 1 3 -2	ROLLER	
9	- 1 4	STOP-MOTION LINK	
9	- 1 5	REGULATING LEVER ASM.	
9	- 1 6	RUBBER CUSHION	3
9	- 1 7 F	SCREW 15/64-28	
9	- 1 8	WASHER	2
9	- 1 9	PRESSURE SPRING	
9	- 2 0	WASHER 7.5*19*1.5	
9	- 2 1	STOP LINK ROD	
9	- 2 2	STOP-MOTION HOOK	
9	- 2 3	WASHER 6.1*15.2*2.5	
9	- 2 4 F	SCREW 15/64-28	
9	- 2 5 H	NUT 15/64-28	
9	- 2 6	GREASE BOX	
9	- 2 7 E	SCREW 15/64-28	
9	- 2 8	WASHER 6.1*18.5*2	
9	- 2 9	SPRING WASHER 6.4*11.9*1.5	
9	- 3 0 F	SCREW 15/64-28	



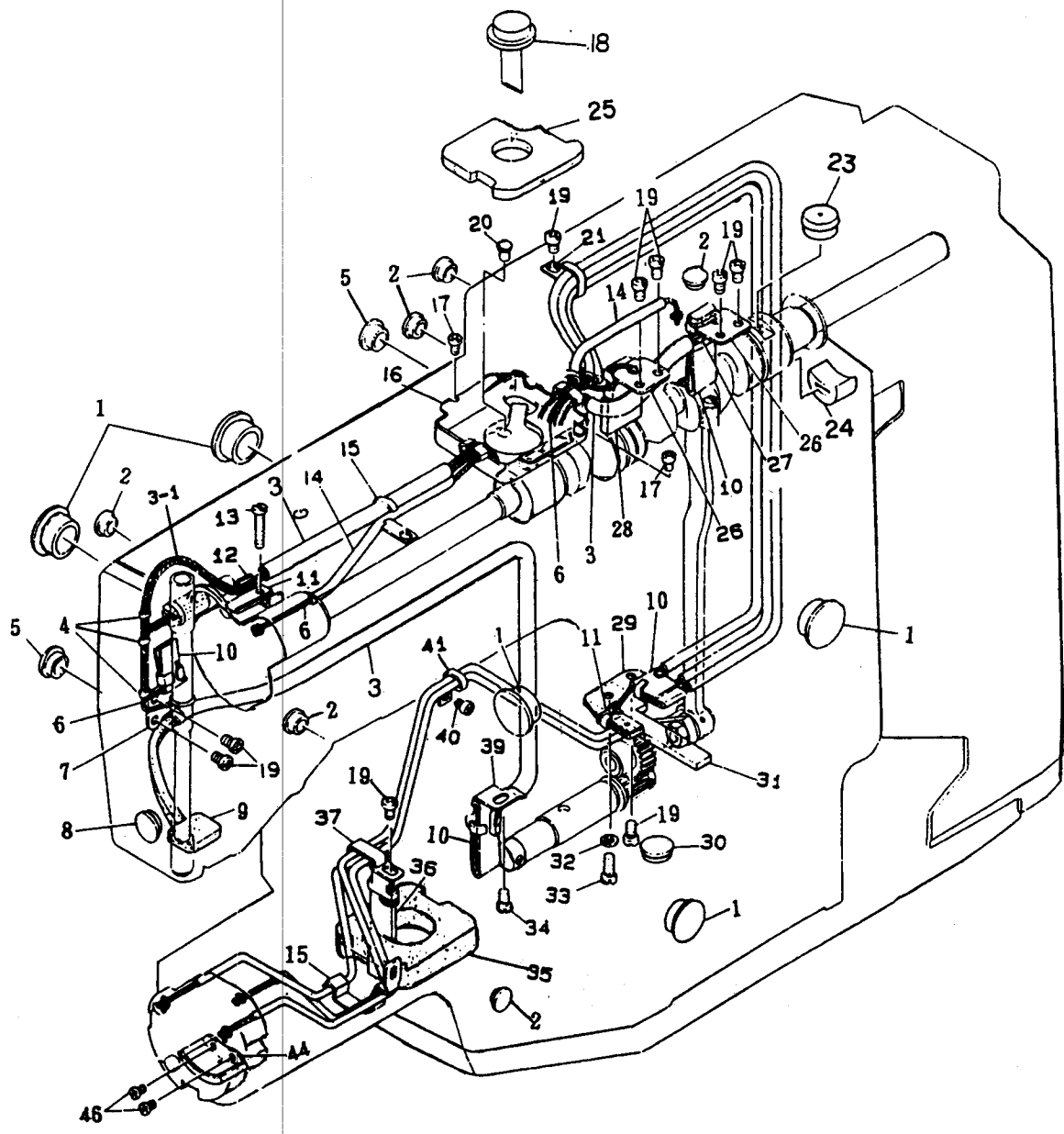


E9

STOP-MOTION MECHANISM COMPONENTS

REF.	NO.	DESCRIPTION	QTY
9	3 1 F	SCREW 15/64-28	2
9	3 2	SAFETY PLATE	
9	3 3 H	NUT 15/64-28	
9	3 4	WASHER 6.1*18.5*2	
9	3 5 H	NUT 15/64-28	
9	3 6	STOP-MOTION LEVER	
9	3 7	STOP-MOTION LEVER PLATE SPRING	
9	3 8 F	SCREW 9/32-28	
9	3 9 F	GUIDE PIN	
9	4 0	SPRING SUSPENSION	
9	4 1	TENSION SPRING	
9	4 2	STOP-MOTION LEVER SHAFT	
9	4 3	DRIVING PLATE	
9	4 4 H	NUT 15/64-28	
9	4 5	TENSION SPRING	
9	4 6	WASHER 4.8*8.4*0.8	
9	4 7 F	HINGE SCREW	
9	4 8	SLIDE ROLLER	
9	4 9	STARTING LEVER	
9	5 0 H	NUT 11/64-40	
9	5 1	SUSPENSION SCREW	
9	5 2 F	HINGE SCREW	
9	5 3	STOP-MOTION ARM SHAFT	
9	5 4 H	NUT 15/64-28	
9	5 5 F	SCREW 15/64-28	
9	5 6 H	NUT 15/64-28	
9	5 7 F	SCREW 15/64-28	
9	5 8 F	HINGE SCREW	
9	5 9	STOP-MOTION ARM A ASM.	
9	6 0	STOP-MOTION CONNECTING LEVER	
9	6 1	E-RING 4	

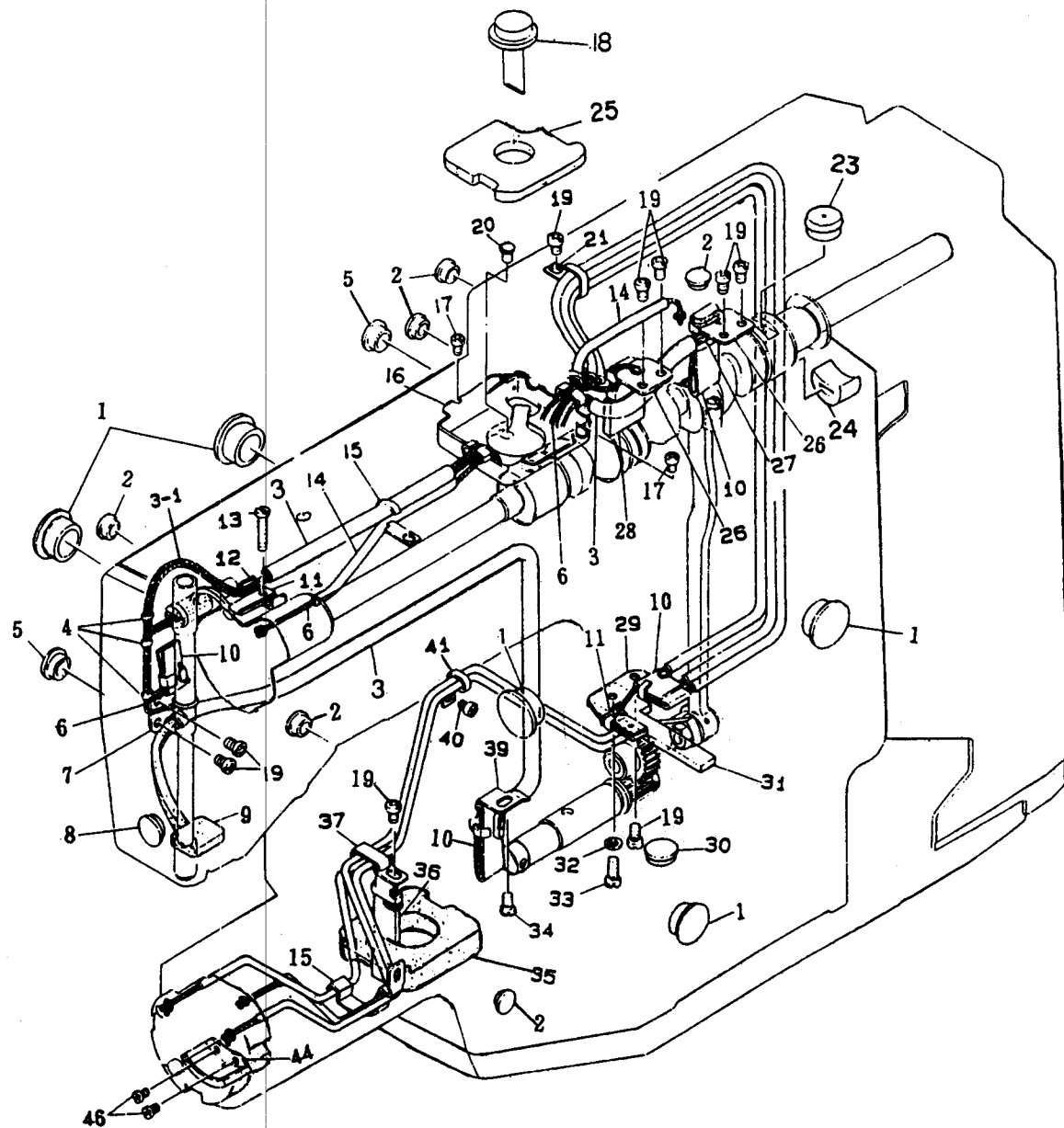




E10

## LUBRICATION MECHANISM COMPONENTS

REF.	NO.	DESCRIPTION	QTY
E 1 0	- 0 1	RUBBER PLUG	5
E 1 0	- 0 2	RUBBER PLUG	6
E 1 0	- 0 3	VINYL TUBE, WHITE D=6	
E 1 0	- 3 -1	OIL TANK FELT	
E 1 0	- 0 4	OIL WICK HOLDER	3
E 1 0	- 0 5	RUBBER PLUG	2
E 1 0	- 0 6	OIL WICK	
E 1 0	- 0 7	OIL WICK HOLDER	
E 1 0	- 0 8	RUBBER PLUG	
E 1 0	- 0 9	OIL FELT	
E 1 0	- 1 0	OIL SPONGE	4
E 1 0	- 1 1	OIL SPONGE	2
E 1 0	- 1 2	LUBRICATING PLATE	
E 1 0	- 13F	SCREW 9/64-40	
E 1 0	- 1 4	VINYL TUBE, WHITE D=3	
E 1 0	- 1 5	OIL WICK HOLDER	2
E 1 0	- 1 6	OIL TANK	
E 1 0	- 17F	SCREW 9/64-40	
E 1 0	- 1 8	OIL GAUGE	
E 1 0	- 19F	SCREW 11/64-40	11
E 1 0	- 2 0	RUBBER PLUG	
E 1 0	- 2 1	OIL WICK HOLDER	
E 1 0	- 2 3	GREASE CAP	
E 1 0	- 2 4	BUSHING	
E 1 0	- 2 5	OIL TANK FELT	
E 1 0	- 2 6	OIL FELT INSTALLING PLATE	2

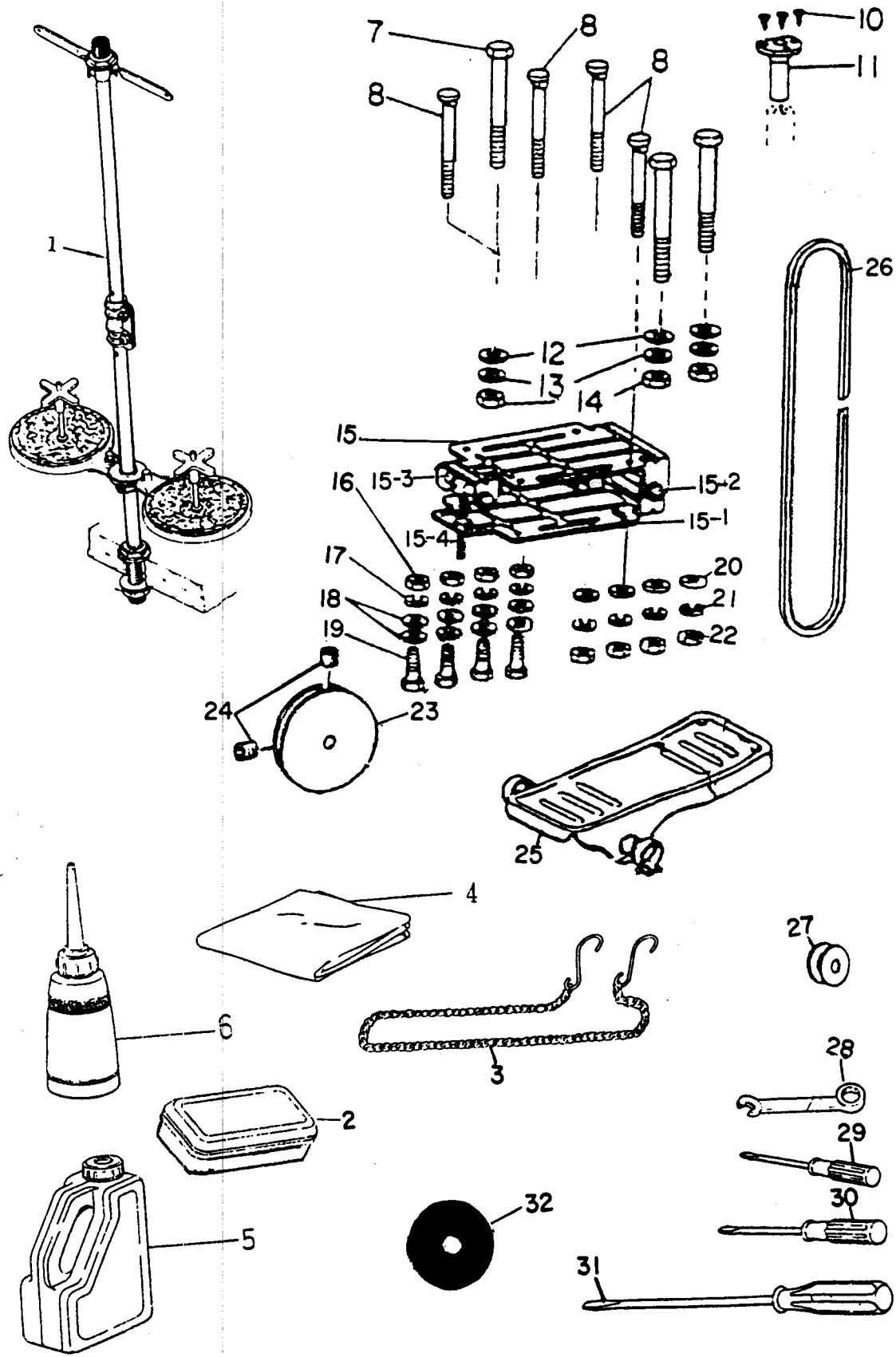


E10

PLICATION MECHANISM COMPONENTS

P.	NO.	DESCRIPTION	QTY
0	- 2 7	OIL FELT	
0	- 2 8	OIL FELT	
0	- 2 9	OIL FELT SUPPORTING PLATE	
0	- 3 0	RUBBER PLUG	
0	- 3 1	OIL WICK SUPPORTING FELT	
0	- 3 2	WASHER 6.2*13*1	
1 0	- 33F	SCREW 11/64-40	
1 0	- 34F	SCREW 11/64-40	
1 0	- 3 5	OIL TANK FELT	
1 0	- 3 6	OIL FELT, FOR SHUTTLE RACF	2
1 0	- 3 7	OIL TUBE HOLDER A	
1 0	- 3 9	OIL FELT HOLDER	
1 0	- 40F	SCREW 11/64-40	
1 0	- 4 1	OIL TUBE HOLDER	
1 0	- 4 4	PRESSER PLATE	
1 0	- 46F	SCREW 9/64-40	2





E11

10

11

26

EF.	NO.	DESCRIPTION	QTY
1	1 - 0 1	THREAD STAND ASM.	
1	1 - 0 2	ACCESSORY BAG	
1	1 - 0 3	CHAIN	
1	1 - 0 4	HEAD COVER	
1	1 - 0 5	OIL TANK	
1	1 - 0 6	OILER ASSEMBLY	
E	1 1 - 0 7	SCREW 15/64-28	3
E	1 1 - 0 8	MOUNTING BOLT	4
E	1 1 - 1 0	WOOD SCREW	3
E	1 1 - 1 1	OIL DPAIN	
E	1 1 - 1 2	WASHER 6.1*18.5*2	3
E	1 1 - 1 3	WASHER 6.2*13*1	3
E	1 1 - 1 4	NUT 15/64-28	3
E	1 1 - 1 5	MOTOR BASE ASM.	
E	1 1 - 15-1	-----	
E	1 1 - 15-2	-----	
E	1 1 - 15-3	-----	
E	1 1 - 15-4	-----	
E	1 1 - 1 6	NUT M6	4
E	1 1 - 1 7	SPRING WASHER 6.2*11.4*1.2	4
E	1 1 - 1 8	WASHER 6.1*18.5*2	8
E	1 1 - 1 9	SCREW M6	4
E	1 1 - 2 0	WASHER 8.5*18*1.6	4
E	1 1 - 2 1	SPRING WASHER 9*15*2	4
E	1 1 - 2 2	NUT 5/16*18	4
E	1 1 - 2 3	MOTOR PULLEY	
E	1 1 - 2 4	SCREW 15/64*28	2
E	1 1 - 2 5	THREADLE	
E	1 1 - 2 6	V-BELT, INCH	2
E	1 1 - 2 7	BOBBIN	3
E	1 1 - 2 8	SPANNER	
E	1 1 - 2 9	SCREW DRIVER	
E	1 1 - 3 0	SCREW DRIVER	
E	1 1 - 3 1	SCREW DRIVER	
E	1 1 - 3 2	RUBBER WASHER	

0  
0  
0  
0  
0

